

Moreland Local Heritage Places Review

**Final Report
November, 2004
(Amended April 2008)**

CONTEXT

**Prepared for
City of Moreland**

© Context Pty Ltd

Project Team:

Chris Johnston, Principal

Katrina Dernelley, Consultant

David Helms, Senior Consultant

Karen Olsen, Senior Consultant

Lee Andrews

Laurie & Pat Burchell, Coburg Historical
Society

Context Pty Ltd

22 Merri Street, Brunswick 3056

Phone 03 9380 6933

Facsimile 03 9380 4066

Email context@context-pl.com.au

CONTENTS

ACKNOWLEDGMENTS	VI
EXECUTIVE SUMMARY	VII
Introduction	vii
Key Findings	vii
Recommendations	ix
1 INTRODUCTION	1
1.1 Purpose	1
1.2 The Brief	1
1.3 Definitions	1
1.4 Background	1
1.5 Previous studies	2
1.5.1 Introduction	2
1.5.2 Brunswick and Coburg heritage studies	4
1.5.3 Moreland heritage studies	5
1.5.4 Other heritage studies	6
2 APPROACH & METHODOLOGY	7
2.1 Introduction	7
2.2 Identification and Assessment of places	7
2.3 Stage 1 – Scoping & Identification	8
2.3.1 Purpose	8
2.3.2 Creation of integrated database	8
2.3.3 Case studies	9
2.3.4 Review of previously assessed places	9
2.3.5 Preliminary assessment	10
2.3.6 Moreland Heritage Places Database	11
2.4 Stage 2 – Assessment	12
2.4.1 Purpose	12
2.4.2 Assessment	12
2.3.2 Documentation	12
3 KEY FINDINGS	15
3.1 Introduction	15
3.2 Heritage Places	15
3.2.1 Introduction	15
3.2.2 State significance	16
3.2.3 Local significance	16

3.2.3	Potential Local significance	16
3.2.4	Local interest or not significant	17
3.2.5	Places of potential Aboriginal significance	17
3.3	Heritage precincts	17
3.3.1	Introduction	17
3.3.2	Local significance	19
3.3.3	Local Interest	20
3.4	Other findings	20
3.5	Moreland Heritage Places Database	20
4	RECOMMENDATIONS	21
4.1	Introduction	21
4.2	Moreland Heritage Review 2004	21
4.3	Planning Scheme Amendment	21
4.3.1	Introduction	21
4.3.2	Update Study references	21
4.3.3	Heritage Overlay Schedule & Maps	23
4.3.4	Design & Development Overlay	23
4.4	VHR recommendations	23
4.5	Further work	24
	REFERENCES	25
	APPENDIX A – SUMMARY OF KEY FINDINGS	26
A.1	Local significance	26
A.1.1	Heritage Places	26
	Former City of Broadmeadows	26
	Former City of Brunswick	27
	Former City of Coburg	29
A.1.2	Heritage precincts	30
A.1.3	Street trees and public parks	32
A.2	Potential significance	34
A.2.1	High priority	34
A.2.2	Medium priority	35
A.3	Local interest or not significant	44
A.4	Demolished places	61
A.5	Potential Aboriginal significance	64
	APPENDIX B – DEFINITIONS & RNE CRITERIA	65
B.1	Definitions	65
B.2	RNE Criteria	66
	Criterion A.4	66

Criterion B.2	66
Criterion C.2	66
Criterion D.2	66
Criterion E.1	66
Criterion F.1	66
Criterion G.1	66
Criterion H.1	66
APPENDIX C – USING THE MHPD	67
What does it do?	67
What does it contain?	67
Detailed place records	67
Basic place records	67
APPENDIX D - STAGE 1 CASE STUDY FINDINGS	68
Introduction	68
Coburg	68
Brunswick	68
Process and outcomes of Stage 1	69
Issues	69
Proposed approach	69

ACKNOWLEDGMENTS

The contribution of the following people and organisations to the completion of this study is gratefully acknowledged:

- John Ness and the members of the Broadmeadows Historical Society.
- Laurie Cunningham and the members of the Brunswick Community History Group.
- Laurie & Pat Burchell and the members of the Coburg Historical Society.
- Keith & Rosemary Dobson and the members of the Fawkner Historical Society.
- Lisa Wilson, Local History Coordinator, Fawkner Public Library.

EXECUTIVE SUMMARY

Introduction

Moreland City Council has a strong and continuing commitment to conserving the rich cultural heritage of the City, which forms an important part of the City's identity and character. As set out in the Brief, the purpose of the *Moreland Local Heritage Places Review 2004* (the Review) is to assist Moreland City Council in identifying, assessing and protecting Moreland's Heritage by:

- Establishing a single integrated heritage database, drawing together all of the past heritage studies and creating an effective tracking and reporting system.
- Clarifying the status of a number of places of potential heritage significance that remain unassessed from previous heritage studies.
- Assessing and documenting all of the places that are assessed as being of local or State significance to a standard suitable for inclusion in the Heritage Overlay of the Moreland Planning Scheme.

Context Pty Ltd was appointed in January 2002 to undertake the Review, which was completed in November 2004. This report provides an explanation of the key findings and recommendations of the Review, as well as the approach and methodology used in its preparation.

Key Findings

Over 1,900 properties throughout the municipality have been assessed by the Review. This figure includes:

- The 54 individual heritage places and 16 heritage precincts (containing approximately 500 properties) assessed in detail by previous heritage studies.
- Over 1,200 other properties (including both individual places as well as groups of places forming potential precincts) identified by previous heritage studies and this Review that have never been assessed in detail before.

The key findings of the Review are summarised in the following table:

Table – Key Findings

Final Assessment	Individual places	Precincts	Total places
Local significance	150	30 precincts containing approximately 700 properties	850 (approx.)
Potential local significance	285	Not applicable	285
Local interest or Not significant	489	10 precincts containing approximately 200 properties	689 (approx.)
Demolished	86	Not applicable	86
TOTAL			1,911 (approx.)

These findings are discussed in more detail in Section 3 of this report.

Recommendations

It is recommended that Moreland City Council:

- Adopt the *Moreland Local Heritage Places Review 2004*.
- Prepare an amendment to the Moreland Planning Scheme to implement key findings of the Review. The key effect of this amendment would be to add the 121 individual heritage places, 29 heritage precincts (containing approximately 700 properties) and 9 street trees/public parks of local significance listed in Appendix A.1 to the Heritage Overlay of the Moreland Planning Scheme.
- Nominate the two places of potential State significance (Oak Park Reserve and the former Belle Vue Park Stables, 9 Oak Park Court, Oak Park) for inclusion on the Victorian Heritage Register.
- Undertake further work to complete the assessment of the 282 places of potential local heritage significance listed in Appendix A.2.
- Refer the places listed in Appendix A.5 to any Aboriginal cultural heritage or strategy prepared for Moreland City Council.
- Undertake a review of the *City of Moreland History*.

These recommendations are discussed in more detail in Section 4 of this report.

1 INTRODUCTION

1.1 Purpose

The purpose of the *Moreland Local Heritage Places Review 2004* (the Review) is to assist the City of Moreland in identifying, assessing and protecting Moreland's cultural heritage by reviewing and assessing places of potential heritage significance, that remain unassessed from previous heritage studies.

Context Pty Ltd was appointed by Moreland City Council in January 2002 to undertake the Review, which was completed by November 2004. This report provides an explanation of the key findings and recommendations of the Review, as well as the approach and methodology used in its preparation.

1.2 The Brief

The Review was carried out in accordance with a Brief prepared by Moreland City Council, which set out the following key tasks that formed the basis of the Review:

- Establish a single integrated heritage database, drawing together the past studies and creating an effective tracking and reporting system.
- Identify and review the heritage places and precincts assessed in detail by previous studies (primarily the Allom Lovell 1999 and 2001 studies – See Section 1.5.3) to determine whether the documentation provides a suitable basis for inclusion in the Heritage Overlay (HO) of the Moreland Planning Scheme (and/or the Victorian Heritage Register or Victorian Heritage Inventory)
- Identify and prioritise for assessment all remaining heritage places and precincts of potential local heritage significance identified by previous studies (primarily the 3/C and 4/D places that remain unassessed from the Context 1990 and Hubbard 1991 studies – See Section 1.5.2) and by others including Council staff, the local community and other key stakeholders such as the National Trust and Heritage Victoria.
- Assess and document all of the places that are assessed as being of local significance (and above) to a standard suitable for inclusion in the HO.

1.3 Definitions

An explanation of the meaning of key terms used in this report is provided in Appendix B.

1.4 Background

Moreland City Council has a strong and continuing commitment to conserving the rich cultural heritage of the City, which forms an important part of the City's identity and character. The Moreland *Municipal Strategic Statement* recognises the importance of Moreland's heritage places and identifies, amongst other things, three key objectives:

- To conserve and enhance buildings, places, archaeological sites and landscapes that contribute to Moreland's rich cultural heritage.

- To foster an appreciation of heritage assets as an expression of Moreland's history and identity.
- To recognise and celebrate the multi-cultural heritage of the community.

Over the past twenty years a number of heritage studies have been undertaken in area that is now defined as the City of Moreland (and the former Cities of Broadmeadows, Brunswick and Coburg – See Section 1.5), however, none of these has provided a complete understanding of the post-contact cultural heritage places throughout the municipality. Key issues at the inception of this Review included:

- A number of individual heritage places as well as heritage precincts found to be of local significance by previous heritage studies have not been included in the Heritage Overlay of the Moreland Planning Scheme, despite this being a key recommendation of the studies.
- A large number of heritage places and precincts of potential local significance identified by previous studies have remained unassessed. In addition, some places of potential significance remained unidentified.

As a result the heritage status of many places remained unclear and many were not protected by any statutory controls. Furthermore, an understanding of exactly how many places fell into this category was hampered by the lack of an integrated database for all heritage places in Moreland.

Accordingly, in 2001 Moreland City Council identified a need to create a single integrated heritage database, which would facilitate undertaking a review of local heritage places within the city.

1.5 Previous studies

1.5.1 Introduction

This section provides an overview of the heritage studies that have been carried out by the present and former municipalities and whether or not they have been implemented as originally recommended. The studies in chronological order are:

- *Brunswick Conservation Study* (1982) Nigel Lewis & Associates (Refer to Section 1.5.1)
- *Merri Creek Parklands: Aboriginal and Historical Heritage Survey*. (1989) Hall, R. (Section 1.5.3)
- *Keeping Brunswick's Heritage. A Report on the Review of the Brunswick Heritage Study*. (1990) Context Pty Ltd (Section 1.5.1)
- *City of Coburg Heritage Conservation & Streetscape Study* (1991). Timothy Hubbard Pty Ltd (Section 1.5.1)
- *Northern Suburbs Factory Study*. (1992) Vines, G & Churchward, M (Section 1.5.3)
- *Merri Creek Concept Plan. Strategic & Statutory Planning Project. Cultural Heritage Report*. (1993) Johnston, C & Ellender, I (Section 1.5.3)
- *City of Moreland Heritage Review* (1998) Allom Lovell & Associates (Section 1.5.2)

- *City of Moreland Heritage Review. HO Precincts Supplementary Report.* (1999) Allom Lovell & Associates (Section 1.5.2)
- *City of Moreland Heritage Review. 44 Streets Additional Heritage Places and Precincts.* (2001) Allom Lovell & Associates (Section 1.5.2)

1.5.2 Brunswick and Coburg heritage studies

The studies undertaken by the former municipalities have included:

- *Brunswick Conservation Study* (1982). This was prepared by Nigel Lewis & Associates for the City of Brunswick. This study was never implemented as it was reviewed in 1990 as described below.
- *Keeping Brunswick's Heritage. A Report on the Review of the Brunswick Heritage Study.* (1990). This was prepared by Context Pty Ltd for the City of Brunswick, and reviewed and extended the work undertaken by the 1982 Lewis study. It therefore identified a number of heritage places, which were assigned a significance value ranging from 1 to 4, as well as heritage precincts (referred to as Heritage Areas by the study). This study was partly implemented – see below.
- *City of Coburg Heritage Conservation & Streetscape Study* (1991). This was prepared by Timothy Hubbard Pty Ltd, and identified a number of heritage places, which were assigned a significance value ranging from A to D, as well as a number of heritage precincts (which were referred to as Conservation Areas by the study). The heritage precincts included both built and landscape areas. The study also identified two 'Urban Design Areas', which were identified "not so much for their historical and architectural value but for their landmark and social value". (Partly implemented – see below)

Individual places assigned a significance value of 1 or 2 (Context 1990) or A/B (Hubbard 1991) and all precincts were fully documented in each study. On the other hand, individual places outside of heritage precincts that were listed as 3/C or 4/D received limited documentation, and the significance value resulted from a preliminary field assessment, usually without the benefit of historical research.

On this basis, each of the above studies made recommendations for appropriate statutory planning protection as well as other controls, policies and guidelines to encourage the conservation of the identified heritage places and precincts. The key recommendations may be summarised as follows:

- All heritage precincts were recommended for inclusion in the Heritage Overlay (HO) of the relevant planning scheme (then known as Urban Conservation areas).
- All individual places with a significance value of 1 or 2 (Context 1990) or A, B or C (Hubbard 1991) were recommended for inclusion in the HO either individually or as part of heritage precincts.
- Places with a significance value of 3 or 4 (Context 1990) or D (Hubbard 1991) were recommended for inclusion in the HO where they were within a heritage precinct.

The recommendations of both studies were only partly implemented by the respective Councils; while most individual heritage places listed as A/1 or B/2 were eventually included in the HO, some heritage precincts were not included, or only included in part. This is discussed further in section 1.5.3.

1.5.3 Moreland heritage studies

Moreland City Council was formed in 1994 and comprises most of the former Cities of Brunswick and Coburg and part of the former City of Broadmeadows.

In 1998, Allom Lovell & Associates was commissioned to undertake the *City of Moreland Heritage Review*. This was intended as a 'gaps' study to supplement the Context 1990 study and Hubbard 1991 study. Specifically, this required:

- A reassessment of the cultural significance of places assigned a significance value of A/1 or B/2 by the two original heritage studies, and the revision of citations as required. Once revised, the places were assigned a new significance value of A, B or C. There was no review of individual places outside of heritage precincts that were listed as 3/C or 4/D by the Context 1990 or Hubbard 1991 studies.
- A review of precincts identified by the Context 1990 or Hubbard 1991 studies, with detailed changes to a number of precincts, including addition, deletion or modification of some precincts.¹
- A survey of landscapes across the municipality; this added 21 new landscape areas to the list of heritage places in Moreland, some of which are along Merri Creek and had been identified in other studies (Refer to Section 1.5.4).
- A limited survey and assessment of some properties in the former City of Broadmeadows, including those on the Victorian Heritage Register, Register of the National Estate or classified by the National Trust of Australia (Victoria). Any places assigned a significance value of A, B or C by Allom Lovell were assessed and documented. It is noted that new surveys of the former Cities of Brunswick and Coburg areas were not carried out as it was assumed that the previous studies had completed this task.
- The preparation of the *City of Moreland History*, which provided an overview of some of the key themes such as 'Survey, Sale and Subdivision' and 'Local Industry' in the post-contact development of the municipality.

It is understood that the majority² of the recommendations of the Allom Lovell 1998 study in relation to the inclusion of heritage precincts in the HO of the Moreland Planning Scheme were implemented via a planning scheme amendment in 1998-99. This added many of the precincts originally identified by the Context 1990 and Hubbard 1991 studies, albeit sometimes in an altered form. However, only those individual places assigned a significance value of A or B by Allom Lovell were added to the HO. (These were in addition to the places already included in the HO in accordance with the Context 1990 and Hubbard 1991 studies)

¹ Of the precincts identified by original studies, three were recommended for deletion: Bell Street (Urban Design Area); Sydney Road Coburg (Urban Design Area) and Hopetoun Heritage Area (Brunswick West); two were added (Park Street East and West); and the boundaries of one were altered: Gallipoli Parade.

² Verbal advice from Liz Nairn, Moreland City Council

As a consequence of the Allom Lovell 1998 study and the subsequent planning scheme amendment, two further studies by Allom Lovell & Associates were commissioned by Moreland City Council. The purpose of each study and its key recommendations may be summarised as follows:

- *City of Moreland Heritage Review. HO Precincts Supplementary Report.* (1999). This report assessed six potential new heritage precincts that had not been identified by previous studies and were instead proposed by public submissions to an Independent Panel appointed to consider the planning scheme amendment to implement the Allom Lovell 1998 study. The Allom Lovell 1999 study recommended that five of the precincts should be included in the HO (four new precincts and one as an extension of an existing precinct) and that two not be included in the HO.
- *City of Moreland Heritage Review. 44 Streets Additional Heritage Places and Precincts.* (2001) The review of heritage precincts by the Allom Lovell 1998 study resulted in altered boundaries and the excision of some properties. The purpose of the Allom Lovell 2001 study was therefore to assess all of the places removed from precincts by the Allom Lovell 1998 study to determine whether they were worthy of inclusion in the HO either individually or as part of smaller sub-precincts. On this basis, the Allom Lovell 2001 study identified eight sub-precincts and 19 individual places of local significance that were recommended for inclusion in the HO.

The recommendations of the Allom Lovell 1999 and 2001 studies have not been implemented by Moreland City Council.

1.5.4 Other heritage studies

Other studies, which have identified heritage places within the municipality include:

- *Northern Suburbs Factory Study.* Vines, G & Churchward, M (1992). This study was commissioned and funded by the Historic Buildings Council (predecessor of the Heritage Council, now part of Heritage Victoria) and the principle aim was to 'make a comparative assessment of buildings, complexes and associated structures of manufacturing industry in Melbourne's northern suburbs and along the transport corridor through Victoria's north east to the New South Wales border at Albury'. One of the study authors, Gary Vines, has advised that this Study examined approximately 95% of pre 1920 factories, and possibly 75% of the 1920 to 1945 factories in the former cities of Fitzroy, Collingwood, Brunswick, Northcote, Coburg, Preston, and Broadmeadows. Approximately 25 factories within Moreland were identified as being significant by this study.
- *Merri Creek Parklands: Aboriginal and Historical Heritage Survey.* Hall, R (1989) and the *Merri Creek Concept Plan Strategic & Statutory Planning Project. Cultural Heritage Report.* Johnston, C (Context Pty Ltd) & Ellender, I (1993). The Hall 1989 report was prepared for the Merri Creek Bicentennial Committee, while the Johnston & Ellender 1993 report was prepared for Melbourne Water and the Merri Creek Management Committee. Approximately 12 places of potential post-contact cultural heritage significance along the Merri Creek within Moreland were identified by these studies.

2 APPROACH & METHODOLOGY

2.1 Introduction

In accordance with guidelines set out in the standard Heritage Victoria brief for undertaking a heritage study, the Review was prepared in accordance with *The Burra Charter: The Australia ICOMOS Charter for Places of Cultural Significance* (1999) and its guidelines.

The Review was guided by a Steering Committee and Project Team that included:

- City of Moreland – Geoff Bellamy, EJ Shue, Liz Nairn, Rachel Haynes, Anita Doilibi and Don Milne (Mapping)
- Context Pty Ltd - Chris Johnston, Katrina Dernelley, David Helms and Karen Olsen.

The Review commenced in February 2002 and was undertaken in two stages as follows as budget and resources allowed:

Stage 1 – Scoping & Identification

Stage 1 was carried out from February 2002 to early 2003 and included the following tasks:

- Creation of integrated database as described in Section 2.3.2
- Case studies (Section 2.3.3)
- Review of previously assessed places (Section 2.3.4)
- Preliminary assessment (Section 2.3.5)
- Update of Moreland Heritage Places Database (Section 2.3.6)

Stage 2 (2003-2004) – Assessment & Documentation

Stage 2 was carried out from May 2003 until November 2004 and included the following tasks:

- Assessment of places (Section 2.4.2)
- Documentation (Section 2.4.3)

2.2 Identification and Assessment of places

Places of cultural heritage significance were identified and assessed using the Register of the National Estate (RNE) criteria (A copy of the criteria is included as Appendix B).

In accordance with Heritage Victoria guidelines, the thresholds applied in the assessment of significance included:

- *State significance.* These are places that are significant to the State of Victoria.
- *Local significance.* These are places that are significant to Moreland City Council. (Note: Some of the places of local significance may also be important at a regional level (e.g. Metropolitan Melbourne), but this would require further research to establish.)

In addition, the following categories were used for places that did not meet the threshold for local or State significance:

- *Local interest.* These are places that have some cultural heritage values, but do not meet the threshold for local significance, particularly when compared to other similar places.
- *Not significant.* These places are not significant. Many of these places have been demolished.

It is important to note that:

- A place may have value to both local and State-wide communities
- The two categories are not 'hierarchical' with one being more important than the other; rather they simply identify the community to which the place is most important.

2.3 Stage 1 – Scoping & Identification

2.3.1 Purpose

The purpose of Stage 1 of the Review was to gain a better understanding of the scope of the project in terms of estimating the number of heritage places or precincts that would require detailed assessment and documentation during Stage 2.

2.3.2 Creation of integrated database

The first task was the creation of a single integrated database, known as the Moreland Heritage Places Database (MHPD). This required importing information from all previous heritage studies into a single Access database using a program created by Context. In addition, new place records were added for:

- Places nominated to the Council since the original studies and prior to this Review by the community, Council's Heritage Adviser, local historic societies, Heritage Victoria, the Australian Heritage Council, the National Trust of Australia (Victoria) and other organisations.
- Places nominated by the community during this Review, which were made in response to articles and notices placed in local newspapers as well by letters to local historical societies. Approximately 26 new places were nominated in this way.

At the time of the completion of this task in late 2002, the MHPD contained place records for over 3200 heritage places and precincts throughout Moreland. This enabled the number of places to be assessed by the Review to be more accurately estimated. Prior to the commencement of the Review Council had initially thought that about 2500-2700 individual places still required assessment. This estimate was revised by Context to approximately 1700 after an initial review of the former studies. When the update of the MHPD was finally completed, this estimate was reduced again to 735 places, which included individual places as well as properties within heritage precincts.

An overview of the MHPD and the information it contains is provided in Appendix C.

2.3.3 Case studies

Two case studies were carried out, which involved the preliminary survey and assessment of two areas in Coburg and Brunswick. The purpose of the case studies was to gain an understanding of:

- How many places (on average) could be excluded from further assessment – i.e. Places that on the basis of an initial visual assessment and analysis do not appear to meet the threshold for local significance.
- How many new places (on average) not previously recognised (ie. by previous studies, community nominations etc.) and not included in the database may be identified by undertaking more detailed investigation.

The key findings of these case studies are provided in Appendix D. In summary, one of the key findings of the case studies was that a significant number of heritage places and precincts were not identified by previous studies – ie. the estimate of 735 places of potential heritage significance requiring review (See Section 2.3.2) was likely to increase once field surveys were carried out (See Section 2.3.5).

On this basis, the case studies were reviewed by the Steering Committee in terms of:

- The adequacy of the results achieved
- The efficiency of the approach
- An estimate of resources required to complete the Review, including the potential for any cost savings in terms of method, level of documentation etc.

On this basis the methodology was refined by the Steering Committee for wider application during the preliminary assessment of all remaining sites.

2.3.4 Review of previously assessed places

The purpose of this task was to review the 54 individual heritage places and 16 heritage precincts (containing approximately 500 properties) of local significance assessed by the Allom Lovell 1999 and 2001 studies and the *Northern Suburbs Factories Study*, which had not been included in the Heritage Overlay of the Moreland Planning Scheme. This review was carried out as a 'desktop' survey, which involved no further historic research, and a preliminary report was presented to Moreland City Council in September 2003. The findings of this preliminary report have now been incorporated into this final report.

In summary, this review involved:

- Brief site inspections of the factories identified by the *Northern Suburbs Factories Study* to determine condition and integrity. No inspections were undertaken of any other places. Moreland City Council advised of places known to have been demolished on the basis of building records.
- Assessing whether the existing place record for a heritage place or precinct is complete and provides adequate justification for its inclusion within the HO of the Moreland Planning Scheme.

The key findings of this review may be summarised as:

- *Places of local heritage significance.* These included heritage places, heritage precincts and public parks/street trees, which had datasheets that are complete

and provide sufficient justification for immediate inclusion in the HO via a Planning Scheme Amendment. These places are now included as part of the lists in Appendix A.1.

- *Places of potential significance that require further assessment.* It is considered that the existing datasheets for these places are not complete and do not provide adequate justification for their inclusion in the HO. A list of these places is provided in Appendix A.2.
- *Places that are not significant or of local interest.* This included places that have been demolished or subject to such major modifications that they have very low integrity and hence do not meet the threshold for local significance. These places are now included as part of the list in Appendix A.3.

2.3.5 Preliminary assessment

The purpose of this task was to undertake a preliminary assessment of places of potential local significance using the methodology developed by the case studies. This included all places that had not been assessed in detail by previous studies. The preliminary assessment included:

- A site visit and field documentation including photograph, description, condition, integrity etc.
- Liaison with local historical societies to gather preliminary information about the significance of the places and precincts.
- For precincts, a description of boundaries and key features.
- A preliminary assessment of significance.

It is important to note that field surveys of the entire municipality were not carried out. However, any new places or precincts identified as a result of these preliminary inspections were assessed in the same way.

Table 2.1 sets out the results of the preliminary assessment.

Table 2.1 – Preliminary Assessment Summary

Former City of	Places surveyed	Places of Potential Local Significance			Total No for research
		Individual*	Precincts	Landscapes	
Coburg	290	94	3	10	107
Broadmeadows	32	14	1	0	15
Brunswick	919	300	25	0	325
Total	1,241	408	29	10	447

*This includes only individual places outside of precincts.

As shown in Table 2.1, a total of 447 places (including 29 precincts and 10 landscapes) were identified to be of potential local significance. The balance of places (794) were

either not significant or of local interest and therefore no further assessment is required.

Of the 447 places of potential significance, the following did not require detailed historic research as there are existing histories for these places:

- The Lorensen Avenue 'Snail Houses' precinct in Merlynston.
- The extension to the Barkly Street precinct, and
- The HCV Fowler Estate precinct in Brunswick.

Accordingly, a total of 444 places required detailed historic research. However, the budget for Stage 2 only allowed for a total of 201 places to be assessed in detail. It was therefore decided by the Steering Committee to prioritise the assessment of places as follows:

- First priority was given to precincts, which would enable the greatest number of places to be assessed and documented.
- Second priority was given to individual places, which fulfilled the following criteria:
 - Is the place associated with one of the key historic themes for the municipality in the *City of Moreland History*?
 - Is the place, either individually or as a type, under threat from demolition or neglect in the municipality?
 - Is the place, either individually or as a type, a rare example in the municipality? For example, is it the only example of a particular style or era of building? Is it the only remaining early building in a town or locality?
 - Is the place (whether it be a building, tree/s, or other feature) in good condition, and reasonably intact, particularly when compared to other similar places?

On this basis, it was resolved to assess and document the following places:

- *Broadmeadows*. Assess all 15 places, as places within this area are under-represented within the municipality. This included the 14 individual places and one precinct, but excluded the landscapes.
- *Coburg*. Assess all 107 of the Coburg places. The assessment of all individual places as well as precincts was made possible as Laurie and Pat Burchell of the Coburg Historical Society assisted with the research for these places.
- *Brunswick*. Assess 79 of the Brunswick places. This comprised 23 precincts (which contained 211 places), plus 56 individual places.

The remaining 243 places were individual places outside of precincts that were all within the former City of Brunswick area.

2.3.6 Moreland Heritage Places Database

The information gathered for every place as a result of the preliminary assessment during this Stage was entered into the MHPD. This included adding new place records as required.

2.4 Stage 2 – Assessment

2.4.1 Purpose

The purpose of Stage 2 of the Review was to assess and document the cultural heritage significance of the priority places and precincts as listed in Section 2.3.5 and determine whether they were of State or local significance, local interest or not significant.

2.4.2 Assessment

The places on the priority lists had been identified as being of potential local significance on the basis of an initial field inspection. Confirming this initial inspection (or otherwise) then required further historic research and analysis. This included applying the themes identified by the *City of Moreland History*, and the RNE criteria.

The research undertaken for heritage places and precincts of potential significance generally included (but was not limited to) an examination of the following sources:

- Primary sources including municipal rate records, Parish & subdivision maps, Melbourne & Metropolitan Board of Works records (Field books, Detail and Record plans), and land and property information held by Land Victoria.
- Secondary sources such as local histories of places and buildings (e.g. *Coburg. Between Two Creeks*), newspaper articles.
- Collections and other archival material held by the State Library, local history collections including information held by the Coburg Historical Society and the Local History Archives of the local libraries, and historic research undertaken by other organizations such as Heritage Victoria and the National Trust of Australia (Victoria).

This historic research was then supplemented by further comparative analysis with similar places. If this research confirmed that the place was indeed of local (or even State) significance then a more detailed physical description of the place was completed. On the other hand, if the historic research indicated that the place did not meet the threshold for local significance then no further analysis was carried out.

The research was carried out by:

- Lee Andrews, for places in Broadmeadows and Brunswick. Lee also prepared draft statements of significance for these properties.
- Laurie and Pat Burchell of the Coburg Historical Society for places in Coburg.

This historic research was reviewed and adapted by Context as required. Comparative analysis was carried out by Context where necessary to establish significance. On this basis, an assessment was made of whether a property met the threshold for local (or perhaps State) significance. If so, a final statement of significance was prepared.

2.3.2 Documentation

Once the assessments were completed, the findings were entered into the Moreland Heritage Places Database (MHPD). For places of local significance, existing citations were revised and new citations were prepared for inclusion in the MHPD, as appropriate, for each place in a manner that is sufficient to form a sound basis for

protection in the Moreland Planning Scheme or nomination to the Victorian Heritage Register (VHR) or Victorian Heritage Inventory (VHI). The citations included:

- A Statement of Significance in accordance with Heritage Victoria guidelines, which describes *What* is Significant, *How* it is Significant, and *Why* it is Significant.
- A history, description of significant fabric and, where relevant, a comparative analysis for the place.
- Colour photograph/s.
- Conservation management objectives and recommendations for statutory protection – e.g. Moreland Planning Scheme, VHR, VHI, and/or interpretation or other actions.

For places considered to be of local interest that were not assessed in detail, a brief record was added to the MHPD, which usually included a brief description of the place, and any other information known about the place.

On this basis, final recommendations were entered in the relevant fields in the 'Recommendations' section of the MHPD using standard terms as follows:

Table 2.2 – Database Recommendations

ASSESSMENT	DATABASE FIELD	
	Stage 2 Priority	Final Ranking
Places & precincts of local significance assessed in detail during Stage 2.	<i>Add to HO – individual, or Add to HO – precinct</i>	Local significance, or State significance
Places & precincts of potential local significance to be assessed in future.	<i>Add to HO – further research required (for places of High Priority), or Assessed (Preliminary) 2004 (for all other places)</i>	Potential significance
Local interest	<i>Assessed (Completed) 2004</i>	Local interest
Other (places that have been demolished or that are otherwise not significant)	<i>Assessed (Completed) 2004, or Demolished</i>	Not significant

3 KEY FINDINGS

3.1 Introduction

Over 1,900 properties throughout the municipality have been assessed by the Review. These include:

- The 54 individual heritage places and 16 heritage precincts (containing approximately 500 properties) assessed in detail by previous heritage studies including the Allom Lovell 1999 & 2001 studies and the *Northern Suburbs Factories Study*.
- Over 1,200 other properties (including both individual places as well as groups of places forming potential precincts) identified by previous studies and this Review that have never been assessed in detail before.

On this basis, the findings of the Review can be summarised as follows:

Table 3.1 – Key Findings

Final Assessment	Individual places	Precincts	Total places
Local significance	121	29 precincts containing approximately 700 properties	748 (approx.)
Potential local significance	285	Not applicable	285
Local interest or Not significant	489	10 precincts containing approximately 200 properties	689 (approx.)
Demolished	86	Not applicable	86
TOTAL			1,911 (approx.)

These findings are discussed in more detail in Section 3.2.

3.2 Heritage Places

3.2.1 Introduction

This section sets out the findings in relation to individual heritage places, which includes all properties outside of identified heritage precincts. Typically, the individual places of local heritage significance in Moreland identified by this Review fulfil one or more of the following criteria; they are:

- Representative examples of buildings that illustrate key themes in the historic development of the municipality. (RNE criteria A4, D2) Examples include the surviving examples of factories, which demonstrate the industrial development of the municipality during the nineteenth and early twentieth century.

- Good or intact examples of an architectural style if a building or with particular aesthetic values for landscapes. If a building, they will often have architectural features that are unusual or rare within the municipality. (RNE criteria B2 and E1) One example is St Bernard's Church in Coburg, which is a fine example of a postwar church.
- Places with social values for particular groups of people (RNE criterion G1) Examples include the schools, churches and other public buildings.
- Places with connections to locally important individuals or organisations (RNE criterion H1) One example is the former Dowling House in Fawkner (identified by the Broadmeadows Historical Society), which is associated with the Dowling family, who were among the first settlers in that area.

3.2.2 State significance

The following two places of potential State significance were identified by the Review:

- Oak Park Reserve, Josephine Street, Oak Park.
- Belle Vue Park Stables (former), 9 Oak Park Court, Oak Park.

Both of these places are important for their associations with the former Belle Vue Park property, which was originally established and owned by John Pascoe Fawkner.

3.2.3 Local significance

The Review has identified 121 individual heritage places that are considered to meet the threshold for local significance when assessed against the RNE criteria, which are listed in Appendix A.1. They include:

- 124 individual heritage places assessed by this Review, as well as 17 individual heritage places originally assessed by the Allom Lovell 1999 and 2001 studies. The majority of these places are houses or other buildings on properties that are privately owned, or are owned by companies or authorities such as Citipower.
- 9 street tree avenues or public parks owned or managed by Moreland City Council (some of which are already partly or wholly within the HO) assessed by the Allom Lovell 1999 and 2001 studies. Some are well documented, and others less well. Nevertheless, each of these is considered to be of sufficient significance to warrant protection under the planning scheme. Development of a simple conservation management plan or policy for significant street trees and each of the parks would assist Council with managing their heritage values.

3.2.3 Potential Local significance

The Review has identified 282 individual places of potential local significance that require further review and/or assessment, which are listed in Appendix A.2. This includes:

- 14 individual places of local significance that were originally identified, assessed and documented by the *Northern Suburbs Factories Study*. A 'desk-top' review of the existing citations for these places during Stage 1 of the Review (See Section 2.3.4) identified that the existing level of documentation is inadequate and/or requires updating to enable it to provide a suitable basis for inclusion in the HO of

the Moreland Planning Scheme. This may include a site inspection, further historic research and the preparation of a new statement of significance.

- 271 individual places assessed by this Review to be of potential local significance, on the basis of the inspection and preliminary research undertaken. Historic research and comparative analysis (similar to that outlined in Chapter 2.4.2) is required to confirm whether this preliminary assessment is correct or should be amended.

3.2.4 Local interest or not significant

Appendix A.3 provides a list of 489 places that are either of local interest or are not significant. Typically, places of 'local interest' within the municipality include:

- Very altered buildings of which better examples exist in the municipality. This does not necessarily mean buildings in poor condition, but rather buildings where the original fabric has been changed to the extent that little evidence exists to demonstrate the historic values of the place.
- Buildings or structures that have been demolished or where no evidence of historic fabric was found.
- Places for which little historic significance or associations could be found.
- Trees or vegetation in poor condition or with low integrity.

Places that are 'not significant' include those sites that have been completely re-developed to the extent that all traces of potentially historic fabric (including archaeological remains) have been obliterated. In some cases, it appears that sites were erroneously identified as further assessment found no significance. (Note: Rather than delete these records from the MHPD, they have been kept in order to ensure that the place is not nominated again in the future)

Appendix A.4 provides a list of 86 places that have been demolished.

3.2.5 Places of potential Aboriginal significance

Appendix A.5 lists places of potential aboriginal significance that should be assessed as part of any future aboriginal heritage study or strategy undertaken by Moreland City Council.

3.3 Heritage precincts

3.3.1 Introduction

In accordance with the Brief, this review adopted the following definition of a 'heritage precinct' as provided by the Allom Lovell reports:

Precincts (in this case small groups or streetscapes of buildings) of heritage significance are defined as those areas which:

- *contain buildings which derive considerable heritage significance from their context and/or relationship with others in the area.*
- *have largely intact or visually cohesive streetscapes, creating precincts of historic and/or architectural integrity.*

- *contain a large number of buildings which are significantly intact; that is, to the extent of the principal elements of the exterior physical fabric and/or having reversible alterations. Reversible alterations are those which are largely superficial and do not affect the structure of the building or its intrinsic decoration. Reconstruction would enhance the appearance of the building and its visual contribution to the streetscape.*
- *may contain individually important buildings which contribute to the historic or architectural significance of the area.*
- *may reflect local historical themes or have particular historical associations or social value.*
- *contain historically or botanically significant gardens, reserves, and specimens.*

In the City of Moreland the Heritage Overlay Precincts typically:

- *contain residential building stock predominantly from the late 19th century to early 20th century and inter-War period.*
- *retain historically important street layouts and subdivisions, in particular from the land boom period of the 1880s and 1890s.*
- *display consistency of scale, height and materials, or, where the scale varies, each building is representative of a period style, eg double storey Victorian or single story inter-war.*
- *display a diversity of styles*
- *contain groupings and individual examples of historically or architecturally significant buildings which are substantially intact.*

Many of the precincts also:

- *demonstrate the influence of local industries—in particular brick making and other clay industries, and quarrying—on residential development.*
- *contain private gardens or street plantings of local historical importance*

In summary, the observations made by Context during this Review generally support the Allom Lovell definition. The following additional comments are made:

- The residential precincts identified by this Review in particular clearly illustrate the cessation in building activity caused by the 1890s depression, which meant that many subdivisions remained undeveloped until the resurgence in development caused by the expansion of industry in the Edwardian and interwar periods. Some areas as far afield as Fawkner remained largely undeveloped until the postwar period. This is reflected in the diversity of styles found in these precincts, which have a unique character created by a scattering of the original Victorian or Federation houses infilled with Edwardian or Interwar villas. This contrasts with the predominantly Victorian precincts in Brunswick, and interwar precincts in Coburg.
- Transport, industry (brick making, quarrying, textiles and manufacturing), and post-war migration were major influences upon the pattern of settlement, and were often closely linked. For example, the surviving late nineteenth and early twentieth century houses in Coburg were associated with ill-fated speculative development inspired by the opening of the railway and later tram services, but that remained undeveloped for many years after initial subdivision. Lygon Street is distinguished from Sydney Road by the amount of twentieth century industrial development particularly associated with textiles and clothing manufacturing, which employed a significant number of migrant workers who settled in the surrounding suburbs. In Fawkner, the establishment of the Ford Factory (and other industries such as Kodak) led to the development of massive housing estates for the workers.

3.3.2 Local significance

On this basis, the Review has identified 30 precincts that are considered to meet the threshold for local significance when assessed against the RNE criteria and are recommended for inclusion in the HO, which are listed in Appendix A.1. These include:

- A total of 12 precincts assessed by the Allom Lovell 1999 and 2001 studies, but which are not currently included in the HO.
- A total of 18 new precincts assessed by this Review.

In accordance with Heritage Victoria guidelines set out in the standard brief for undertaking heritage studies, buildings and other elements within precincts are no longer assigned an individual significance value such as A, B or C, but are either identified as 'contributory' or 'non-contributory' to the significance of the precinct.

3.3.3 Local Interest

A total of 10 precincts identified by Stage 1 were found not to meet the threshold for local significance when assessed during Stage 2, particularly when compared to other similar precincts. Typically, these precincts had lower integrity (ie. there is a higher number of non-contributory dwellings) when compared with more intact examples that illustrated similar historic themes.

An example is Allan Street, which despite having some fine individual examples and small groups of houses is less intact and consistent in character when compared to the nearby precincts in Bruce Street or Warburton Street, which demonstrate well the 'stop-start' historic development of this part of Brunswick.

3.4 Other findings

The assessment of places used the *City of Moreland History*, prepared by Allom Lovell as part of the 1998 study, as a reference. However, it was found that the *City of Moreland History* does not provide an adequate description of all the themes that were important in shaping the post-contact development of the municipality. For example, clothing and textile industries are dealt under a heading of 'Other industries' along with a number of other industries when in fact they probably deserve to be dealt with separately and in more detail. Further, the history does not always analyse the impact of a theme upon the development of municipality in terms of the provision of housing and related services.

Consequently, the existing *City of Moreland History* does not always provide a proper context to identify and/or assess heritage places, particularly in terms of undertaking a comparative analysis. It would be beneficial to undertake a review of the History, particularly in light of the more detailed research that has been undertaken as part of this Review.

3.5 Moreland Heritage Places Database

All of the data gathered during the Review has been added to the Moreland Heritage Places Database (MHPD). This has included the creation of new place records as follows:

- Detailed place records for the heritage places and precincts assessed by the Review and found to be local significance.
- Basic place records for heritage places or precincts found to be of local interest or not significant.

Consequently, the MHPD now contains over 5800 place records.

4 RECOMMENDATIONS

4.1 Introduction

This section provides key recommendations of the Review, which are considered to be fundamental to the achievement of an effective Heritage Strategy for the municipality.

It is recommended that Moreland City Council:

- Adopt the *Moreland Local Heritage Places Review 2004* as described in Section 4.2.
- Prepare an amendment to the Moreland Planning Scheme to implement key findings of the Review (Section 4.3)
- Nominate places of potential State significance for inclusion on the Victorian Heritage Register (Section 4.4)
- Undertake further work to complete the assessment of the 282 places of potential local heritage significance. (Section 4.5)
- Undertake a review of the *City of Moreland History*. (Section 4.5)

4.2 Moreland Heritage Review 2004

On the basis of the key findings in this report, it is recommended that Moreland City Council adopt the *Moreland Local Heritage Places Review 2004*, which comprises:

- *Heritage Place & Precinct Citations* (As contained in the Moreland Heritage Places Database)
- *Key Findings and Recommendations* (This report)

4.3 Planning Scheme Amendment

4.3.1 Introduction

It is recommended that Moreland City Council prepare and exhibit an amendment to the Moreland Planning Scheme to implement the findings of the *Moreland Local Heritage Places Review 2004*. This amendment would:

- Update Study references as described in Section 4.3.2.
- Update the Heritage Overlay Schedule & Maps by adding heritage places and precincts of local significance identified by the Review to the HO (4.3.3)
- If considered appropriate, add new places to Design and Development Overlay 1 that are adjacent to individual heritage places or the edges of heritage precincts. (4.3.4)

4.3.2 Update Study references

References to the Moreland Heritage Study (including any references to previous studies such as the Allom Lovell 1998, 1999 and 2001 reports) throughout the Moreland Planning Scheme should be replaced with the new title of the *Moreland Local Heritage Places Review 2004*.

4.3.3 Heritage Overlay Schedule & Maps

The following changes are recommended:

- Replace the existing Schedule to the Heritage Overlay in the Moreland Planning Scheme with a new Schedule, which includes:
 - The existing heritage places listed in the Schedule.
 - The heritage places and precincts of local significance assessed by the Review as listed in Appendix A.1.

It is also recommended that the Schedule is reviewed to ensure that:

- It is consistent with the VPP Practice Note *Applying the Heritage Overlay*.
- Places are listed in alphabetical order by street address in accordance with Heritage Victoria guidelines. Precincts should be listed in alphabetical order by name at the beginning of the Schedule.
- External paint controls do not apply unless the existing colour scheme is cited by the Review as a reason for the significance for the heritage place.
- Tree controls only apply to those places where significant trees have been identified by the Review.
- Internal alterations controls only apply to public buildings or to places with significant interiors as identified by the Review.
- Amend the relevant Moreland Planning Scheme Heritage Overlay maps and add new maps as required.

This will map the heritage places and precincts in accordance with the recommendations of the Review to include the places listed in Appendix A.1.

4.3.4 Design & Development Overlay

It is also recommended that consideration be given to adding the Design and Development Overlay 1 – Heritage Protection (DDO1) to properties in the Residential 1 Zone that are adjacent to individually listed heritage places or properties on the edges of heritage precincts listed in Appendix A.1.

This purpose of DDO1 would be to ensure that new development on sites adjacent to a heritage place will not affect the setting of that place. It would not include controls over demolition, but will require a permit for certain forms of development (e.g. above one storey in height or where lesser setbacks are proposed) to ensure that heritage objectives are considered.

4.4 VHR recommendations

It is recommended that Moreland City Council nominate the following places for inclusion on the Victorian Heritage Register:

- Oak Park Reserve, Josephine Street, Oak Park
- Belle Vue Park Stables (former), 9 Oak Park Court, Oak Park.

4.5 Further work

It is recommended that Moreland City Council undertake the following work to complete the Review:

- An assessment of the 282 individual places listed in Appendices A.2 that are of potential local significance, but which require further historic research and analysis to confirm this. This includes 32 places of high priority (shown in bold in Appendix A.2.1) which should be assessed as soon as possible.
- A review of the *City of Moreland History* to ensure that it provides a comprehensive assessment and description of the historic themes that have been important in the post-contact development of the municipality. This should determine if the emphasis given to particular themes in the existing history need to be reviewed in the light of the detailed work undertaken for this Review. It was also possible that new themes may emerge. On this basis, a statement of significance for the municipality may be prepared.
- Refer the places listed in Appendix A.5 to any Aboriginal cultural heritage study prepared for the municipality.

REFERENCES

- Allom Lovell & Associates (1998) *City of Moreland Heritage Review Volumes 1-4*
- Allom Lovell & Associates (1999) *City of Moreland Heritage Review. H0 Precincts Supplementary Report*
- Allom Lovell & Associates (2001) *City of Moreland Heritage Review. 44 Streets Additional Heritage Places and Precincts.*
- Australia ICOMOS (1999) *The Burra Charter: Australia ICOMOS Charter for the Conservation of Places of Cultural Heritage Significance*
- Context Pty Ltd (1990) *Keeping Brunswick's Heritage. A Report on the Review of the Brunswick Heritage Study*
- Department of Sustainability and Environment, (1999) VPP Practice Note. *Applying the Heritage Overlay*
- Department of Sustainability and Environment, (1999) VPP Practice Note. *Format of Municipal Strategic Statements*
- Department of Sustainability and Environment, (1999) VPP Practice Note. *Writing a Local Planning Policy*
- Hall, R (1989) *Merri Creek Parklands: Aboriginal and Historical Heritage Survey.* (1989)
Hall, R.
- Johnston, C (Context Pty Ltd) & Ellender, I (1993) *Merri Creek Concept Plan. Strategic & Statutory Planning Project. Cultural Heritage Report.*
- Nigel Lewis & Associates (1982) *Brunswick Conservation Study*
- Timothy Hubbard Pty Ltd (1991) *City of Coburg Heritage Conservation & Streetscape Study*
- Vines, G & Churchward, M (1992) *Northern Suburbs Factory Study*

APPENDIX A – SUMMARY OF KEY FINDINGS

A.1 Local significance

It is recommended that the following heritage places, precincts and street trees and public parks be included in the Heritage Overlay of the Moreland Planning Scheme.

A.1.1 Heritage Places

Former City of Broadmeadows

This includes the suburbs of Broadmeadows, Fawkner, Glenroy and Oak Park.

Place name	Address		Locality
1. St Mark's Parish Primary School	118	Argyle Street	Fawkner
2. Greystanes (former Tiverton)	58	Belair Avenue	Glenroy
3. Hutchinson's Flour Mill (former)	Cnr.	Hartington & Marlborough Streets	Glenroy
4. Quarry		Imaroo Street (Opposite 5, 7, 9 end of Argyle St)	Fawkner
5. Fawkner State School (former)	85-105	Lynch Road	Fawkner
6. Dowling house	82	Major Road	Fawkner
7. House	151	Melbourne Ave	Glenroy
8. 'Belle Vue' Stables (former)	9	Oak Park Court	Glenroy
9. Fawkner Methodist Church (former)	1218-20	Sydney Road	Fawkner
10. House	16	Tudor Street	Glenroy
11. Glenroy Primary School No. 3118	54	Wheatsheaf Road	Glenroy
12. The Pines	11	Willett Street	Oak Park

Former City of Brunswick

This includes the suburbs of Brunswick, East Brunswick and West Brunswick.

Place name	Address		Locality
13. Salvation Army hall	256	Albert Street	Brunswick
14. Shop	258	Albert Street	Brunswick
15. House	265	Albion Street	Brunswick
16. House	275	Albion Street	Brunswick
17. Methodist Church (former)	279	Albion Street	Brunswick
18. House	281	Albion Street	Brunswick
19. House	283	Albion Street	Brunswick
20. FJ Wolfe Cordage Manufacturer	399-401	Albion Street	West Brunswick
21. House	36	Alister Street	East Brunswick
22. House	6	Allard Street	West Brunswick
23. Houses (terrace)	216-222	Barkly Street	Brunswick
24. Houses	18-28	Brunswick Road	East Brunswick
25. SEC substation	64-64B	Brunswick Road	Brunswick
26. Houses (pair)	104-106	Brunswick Road	Brunswick
27. City of Brunswick Electricity Supply Building	119	Brunswick Road	Brunswick
28. City of Brunswick Electricity Supply transformer stations	188	Brunswick Road	Brunswick
29. Masonic Temple (former)	265	Brunswick Road	Brunswick
30. Terrace	5-11	Burchett Street	Brunswick
31. House	7	Cadman Street	West Brunswick
32. Chewton	27	Carnarvon Street	Brunswick
33. Houses	29-33	Carnarvon Street	Brunswick
34. House	39	Cassels Road	Brunswick
35. Charsfield (former)	41	Cassels Road	Brunswick
36. House & Canary Island Palm	28	Crisp Avenue	Brunswick
37. House	75	Davies Street	Brunswick
38. City of Brunswick Electricity Supply transformer stations	168	Edward Streets	East Brunswick
39. Bluestone Cottage	197-199	Edward Street	Brunswick
40. Shop & house	88	Evans Street	Brunswick
41. House	2	Fallon Street	Brunswick

Place name	Address		Locality
42. Houses (row)	15-29	Ford Street	Brunswick
43. Steel Company of Australia Ltd (former)	14	Frith Street	Brunswick
44. House	87	Garnet Street	Brunswick
45. Brunswick Free Kindergarten	61	Glenlyon Road	Brunswick
46. Valburn (house & two Canary Island Palms)	210	Glenlyon Road	East Brunswick
47. House	225	Glenlyon Road	East Brunswick
48. City of Brunswick Electricity Supply transformer stations		Howarth Street	Brunswick
49. Former Moran & Cato Store	119	Lygon Street	Brunswick
50. House	1	Maghull Street	Brunswick
51. Jacobs Reserve & Scout Hall		Melville Road	West Brunswick
52. House	25	Mincha Street	West Brunswick
53. House	68	Mitchell Street	Brunswick
54. House	86	Mitchell Street	Brunswick
55. Robin Lodge	124	Moreland Road	Brunswick
56. Armine	126	Moreland Road	Brunswick
57. House	290	Moreland Road	Brunswick
58. Brimin	292	Moreland Road	Brunswick
59. House	7	Mountfield Street	Brunswick
60. House	30	Murray Street	West Brunswick
61. Lomond Hotel	225	Nicholson Street	East Brunswick
62. Apartments	827	Park Street	Brunswick
63. House, garden & front fence	833	Park Street	Brunswick
64. House	835	Park Street	Brunswick
65. Brunswick North Primary School	144	Pearson Street	West Brunswick
66. House	10	South Audley Street	Brunswick
67. House	273	Union Street	West Brunswick
68. Shop (former) & residence	177	Victoria Street	Brunswick
69. House	230	Victoria Street	Brunswick
70. House	232	Victoria Street	Brunswick
71. UFS Dispensary (former)	307	Victoria Street	Brunswick
72. Roberts' Buildings	309-313	Victoria Street	Brunswick

Place name	Address	Locality
73. Houses	176-178 Weston Street	East Brunswick
74. Presbyterian Church (former)	213A Weston Street	East Brunswick

Former City of Coburg

This includes the suburbs of Coburg, Coburg East, Coburg North, Pascoe Vale, and Pascoe Vale South.

Place name	Address	Locality
75. Whare-Ha	62 Barrow Street	Coburg
76. House	65 Bell Street	Coburg
77. Antient York Lodge No. 80 Temple (former)	124 Bell Street	Coburg
78. Police station	160 Bell Street	Coburg
79. Residences	225-233 Bell Street	Coburg
80. Post Office	366-388 Bell Street	Pascoe Vale Sth
81. Police Station	562 Bell Street	Pascoe Vale Sth
82. Capragh	3 Deans Street	Coburg
83. Victoriana	5 Deans Street	Coburg
84. Coburg Electricity Supply Building (former)	19-21 Harding Street	Coburg
85. Residence	20 Harding Street	Coburg
86. Coburg Court House (former)	1A-1B Main Street	Coburg
87. Fitzroy Villa	1 McKay Street	Coburg
88. Franklin	72 Munro Street	Coburg
89. Akins Auto Service	44 Nicholson Street	Coburg East
90. House	75 Nicholson Street	Coburg
91. St. Peter's Anglican Church	122 Nicholson Street	Coburg
92. Warder's Cottage (former)	20 O'Hea Street	Coburg
93. Warder's Cottage (former)	22 O'Hea Street	Coburg
94. St. Bernard's Catholic Church complex	36 Patterson Street	Coburg
95. House	54 Rennie Street	Coburg
96. House	27 Rennie Street	Coburg
97. Summer Cove	3 Rennie Street	Coburg
98. Montague Dare residence (former)	130 Rennie Street	Coburg East

Place name	Address	Locality
99. Coburg West Primary School	185-87 Reynard Street	Coburg
100. Hygienic Building	27-33 Sydney Road	Coburg
101. Shop	164 Sydney Road	Coburg
102. Baptist Church	298 Sydney Road	Coburg
103. Shops	385-391 Sydney Road	Coburg
104. Dunne's Building	436-442 Sydney Road	Coburg
105. Shop	470 Sydney Road	Coburg
106. UFS Dispensary (former)	559 Sydney Road	Coburg
107. Coburg Metropolitan Fire Brigade Station (former)	725 Sydney Road	Coburg
108. Uniting Church	21 Victoria Street	Coburg
109. Merlynston Uniting Church	22 Orvieto Street	Coburg North
110. St Andrew's Uniting Church	10 Cumberland Road	Pascoe Vale Sth
111. House	61 Cumberland Road	Pascoe Vale
112. World War 1 Soldiers' Memorial	109 Cumberland Road	Pascoe Vale
113. Mt Sabine (former – now Pascoe Vale Girls' High School)	25 Lake Avenue (corner Northumberland Road)	Pascoe Vale
114. Blessed Oliver Plunkett's School	1-33 Landells Road	Pascoe Vale
115. Duplex	2-4 Langtree Avenue	Pascoe Vale Sth
116. St Fidelis' Primary School (Senior Campus)	Langtree Avenue (corner Woodlands Avenue)	Pascoe Vale Sth
117. Holy Trinity Anglican Church	29 Pleasant Street	Pascoe Vale
118. Wilsleigh	31 Pleasant Street	Pascoe Vale
119. Residence	35 Pleasant Street	Pascoe Vale
120. Residence	54 Rainer Street	Pascoe Vale Sth
121. Residence	57 Rainer Street	Pascoe Vale Sth

A.1.2 Heritage precincts

Precinct name	Streets Included	Approx. No. of properties	Notes (if any)
1. Barkly Street West (ex Railway Precinct)	288-292, 299-309 & 317-323 Barkly Street, Brunswick	8	

Precinct name	Streets Included	Approx. No. of properties	Notes (if any)
2. Bourke Street	1-3 & 2-14 Bourke Street, Coburg	10	
3. Bruce Street	2-12 & 3-5 Bruce Street, Brunswick	8	
4. Brunswick Road East	196-224 Brunswick Road, Brunswick (Sydney Road to Railway)	12	Add to existing H032
5. Coonan's Hill Extension	1-59 & 2-74 Ward Grove & 25-99 Woodlands Avenue,	70	
6. Dudley Street	1-19 & 2-22 Dudley Avenue, East Brunswick	21	
7. Florence Street	23-37 & 28-32 Florence Street, Coburg	6	
8. French Avenue	1-17 & 2-18 French Avenue, Brunswick	21	
9. Gordon Street + Devon Avenue	1A-69 & 2-68 Devon Avenue	150	Add to existing H087
10. Glenlyon Road	100-110 & 107-111 Glenlyon Road, West Brunswick	10	Add to existing H075
11. HCV Fowler Estate	524-534 Albion Street, Wyall & Yarrabin Streets, 20 Waxman Parade, West Brunswick	61	
12. Hickford Street	9-77 & 56-90 Hickford Street, Brunswick	60	
13. Lascelles Street	1-41, 2-54 Lascelles Street, & 153, 236-240 Reynard Street, Coburg	40	
14. Lorensen Avenue ('Snail houses')	8-52 Lorensen Avenue, Merlynston (Coburg North)	20	
15. Loyola Avenue	1-15 Loyola Avenue, Brunswick	12	
16. Lygon Street	38-58 Lygon Street, East Brunswick	10	Add to existing H014
17. Manallack Street	4-14 Manallack Street, Brunswick	8	Adjoins Union Street (See below).
18. Marks Street	1-11 & 2-10 Marks Street, Brunswick	11	

Precinct name	Streets Included	Approx. No. of properties	Notes (if any)
19. Olga Street	1-9, 2-12 Olga Street, Coburg	12	
20. Reaburn Crescent	1-13 & 2-18 Reaburn Crescent & 1-3 Wattle Valley Road, West Brunswick	20	
21. Roberts Street	1-13 & 2-14 Roberts Street & 23 Victoria Street, East Brunswick	15	
22. Rodda Street	17-39 & 24-44 Rodda Street, Coburg	23	
23. Stewart Street	125-45 & 136-62 Stewart Street, East Brunswick	25	
24. Sumner Estate	1-33 & 2-22 Rupert Street, 1-29 & 2-30 Lowan Street, 3-11 & 4-12 Peers Street, and 3-15 & 2-16 Sumner Street, Brunswick	42	
25. Sunbeam Street	1-13, 2-16 Sunbeam Street, & 221-253, 268-302 Sussex Street, Pascoe Vale	50	
26. Union Street	8-14 Union Street, Brunswick	4	Adjoins Manallack Street (See above)
27. Victoria Street	58-76 Victoria Street, East Brunswick	12	
28. Warburton Street	1-27, 18-30 Warburton Street, Brunswick	20	
29. Wilkinson Street	7-13, 23-31 & 37-39 Wilkinson Street, Brunswick	11	7-13 are currently in H0149. Remove from H0149 and include in new precinct.

A.1.3 Street trees and public parks

Place name	Address	Notes (if any)
1. Anderson Reserve	Linda Street, Coburg	

Place name	Address	Notes (if any)
2. Cypress Row	Glenroy Road (b/w Logan Street & Cardinal Road), Glenroy	
3. GA Bridges Reserve	Bell Street, Coburg	Already protected in planning scheme. Add tree controls to HO.
4. Quarry (former – now part of De Chene Reserve)	Bell Street, Coburg	
5. Oak Park Reserve	Josephine Street, Oak Park	
6. Peppercorn tree (Schinus molle var. areira)	37 Josephine Street (Outside 37), Oak Park	
7. Street trees	Champ Street, Coburg	
8. Street trees	Glenmorgan Street, East Brunswick	
9. Hooper Reserve	Royal Parade, Brunswick	Already protected in planning scheme. Add tree controls to HO.

A.2 Potential significance

A.2.1 High priority

These are places, which are good examples of their type when compared to other similar places in the municipality. Some historic research has been undertaken for the places shown in bold.

Place name	Address		Locality
1. House	177	Brunswick Road	Brunswick
2. House	22	David Street	Brunswick
3. House	32	David Street	Brunswick
4. House	38	David Street	Brunswick
5. Houses	12 to 16	Davies Street	Brunswick
6. House	44	De Carle Street	Brunswick
7. House	142	Donald Street	Brunswick
8. Houses	134-136	Donald Street	Brunswick
9. House	15	Howard Street	Brunswick
10. House	41	Howard Street	Brunswick
11. House and fence	38	John Street	East Brunswick
12. Timber buildings (rear of site)	7	Luscombe Street	Brunswick
13. Precinct - Lygon Street (Context 2004)	1-513	Lygon Street	East Brunswick
14. House	2	McLean Street	West Brunswick
15. House	4	McLean Street	West Brunswick
16. Houses (pair)	41-43	Mountfield Street	Brunswick
17. House and Canary Island Palm	255	Nicholson Street	East Brunswick
18. House	26	Peacock Street	West Brunswick
19. House	115-123	Pearson Street	West Brunswick
20. House	19	Rose Street	Brunswick
21. House	21	Stanley Street	Brunswick
22. House	29	Stanley Street	Brunswick
23. Precinct - Ford Factory Housing	Various		Fawkner
24. Bethany Gospel Hall (former)	235	Victoria Street	Brunswick
25. Alma Cottage	237	Victoria Street	Brunswick
26. Houses (2)	241-243	Victoria Street	Brunswick
27. Brunswick Bowling Club	98-106	Victoria Street	East Brunswick
28. Precinct - Waxman Parade	4 to 10	Waxman Parade	West Brunswick

Place name	Address		Locality
29. House	92	Whitby Street	West Brunswick

A.2.2 Medium priority

Place name	Address	Locality		Notes
30. House	9	Aberdeen Street	Brunswick	
31. House	8	Aintree Street	East Brunswick	
32. House	5	Akeroa Avenue	East Brunswick	
33. Terrace house (one of a pair)	109	Albert Street	Brunswick	
34. House	137	Albert Street	Brunswick	
35. Church (former)	170	Albert Street	Brunswick	
36. House	188	Albert Street	Brunswick	
37. Houses (2)	23-25	Albert Street	East Brunswick	
38. "Glen Iris" and "Hazel Glen"	28-30	Albert Street	East Brunswick	
39. House	50	Albion Street	East Brunswick	
40. House & shop	103	Albion Street	Brunswick	
41. House	152	Albion Street	Brunswick	
42. House	162	Albion Street	Brunswick	
43. House	164	Albion Street	Brunswick	
44. House	180	Albion Street	Brunswick	
45. House	396	Albion Street	West Brunswick	
46. Healing warehouse	443	Albion Street	West Brunswick	Statement of Significance needs Revision
47. Shops (3)	193-197	Albion Street	Brunswick	
48. Shops (former)	93-97	Albion Street	Brunswick	
49. House	27	Austral Avenue	Brunswick	
50. House	37	Austral Avenue	Brunswick	
51. House	19	Balmoral Avenue	East Brunswick	
52. House	2	Bank Street	Brunswick	
53. House	5	Bank Street	Brunswick	
54. House	6	Bank Street	Brunswick	

Place name	Address	Locality	Notes
55. House	13	Bank Street	Brunswick
56. House	26	Bank Street	Brunswick
57. House	11	Barkly Street	East Brunswick
58. House	172	Barkly Street	Brunswick
59. Shop (former)	209	Barkly Street	Brunswick
60. House	226	Barkly Street	Brunswick
61. R.J. Henderson box factory	393	Barkly Street	Brunswick
62. Houses (Terrace)	182-188	Barkly Street	Brunswick
63. Houses (Terrace)	211-219	Barkly Street	Brunswick
64. House	21	Barrow Street	Brunswick
65. House	40	Barrow Street	Brunswick
66. House	54	Barrow Street	Brunswick
67. House	56	Barrow Street	Brunswick
68. Beatrice	28	Barry Street	Brunswick
69. House	6	Bennie Street	Brunswick
70. House (Terrace)	5 to 13	Bennie Street	Brunswick
71. Shop & dwelling	32-34	Blair Street	Brunswick
72. House and shop (former)	123	Blyth Street	Brunswick
73. House	33	Breese Street	Brunswick
74. House	35	Breese Street	Brunswick
75. House	100	Brunswick Road	Brunswick
76. Cotton Palms	179	Brunswick Road	Brunswick
77. House	193	Brunswick Road	Brunswick
78. House	211	Brunswick Road	Brunswick
79. House	230	Brunswick Road	Brunswick
80. House	235	Brunswick Road	Brunswick
81. House	299	Brunswick Road	Brunswick
82. House	307	Brunswick Road	Brunswick
83. House	308	Brunswick Road	Brunswick
84. Avalon	328	Brunswick Road	Brunswick
85. House	408	Brunswick Road	West Brunswick
86. Alex Sturrock & Sons	125-129	Brunswick Road	Brunswick
			Statement of

Place name	Address	Locality	Notes
furniture factory (former)			Significance needs Revision
87. Rayon Distributors	61-63	Brunswick Road	East Brunswick
88. House	4	Cameron Street	Brunswick
89. 'Sandilli' & 'Stanley'	5 to 7	Carnarvon Street	Brunswick
90. House	23	Cassels Road	Brunswick
91. House	38	Cassels Road	Brunswick
92. House	35	Charles Street	Brunswick
93. House	37	Charles Street	Brunswick
94. Page & Barrie Factory (former)	2A	Charles Street	Brunswick
95. Houses	40-42	Charles Street	Brunswick
96. Hotel? (former)	26	Clarke Street	East Brunswick
97. House	9	Collace Street	Brunswick
98. House	2	Connelly Street	Brunswick
99. House	8	Crisp Avenue	Brunswick
100. House	10	Crisp Avenue	Brunswick
101. House (Closer Settlement)	46	Cumming Street	West Brunswick
102. House	19	Davies Street	Brunswick
103. House	42	Davies Street	Brunswick
104. House	80	Davies Street	Brunswick
105. House	90	Davies Street	Brunswick
106. Millers Ropeworks (fmr)	29	Dawson Street	Brunswick
107. W.T. Rawleigh & Co.	60	Dawson Street	Brunswick
108. House	5	De Carle Street	Brunswick
109. House	1	Deans Street	Coburg
110. House	10	Deans Street	Coburg
111. House	32	Denman Street	Brunswick
112. Factory (former)	24	Dods Street	Brunswick
113. House	1	Donald Street	Brunswick
114. House	11	Donald Street	Brunswick

Place name		Address		Locality	Notes
115.	'Myall'	103	Donald Street	Brunswick	
116.	House	119	Donald Street	Brunswick	
117.	'Padua'	120	Donald Street	Brunswick	
118.	House + Fence	156	Donald Street	East Brunswick	
119.	Prestige Hosiery (former)	159-165	Donald Street	East Brunswick	
120.	House	152	Edward Street	Brunswick	
121.	House	160	Edward Street	Brunswick	
122.	House	212	Edward Street	East Brunswick	
123.	House	226	Edward Street	East Brunswick	
124.	House	228	Edward Street	East Brunswick	
125.	Houses (pair)	140-142	Edward Street	Brunswick	
126.	House	6	Evans Street	Brunswick	
127.	House	23	Evans Street	Brunswick	
128.	Sleeping Beauty Products factory	101-105	Evans Street	Brunswick	Statement of Significance needs Revision
129.	House (pair)	111-113	Evans Street	Brunswick	
130.	House	3	Eveline Street	Brunswick	
131.	House	7	Eveline Street	Brunswick	
132.	Cottage	17	Eveline Street	Brunswick	
133.	House	5	Fallon Street	Brunswick	
134.	House	1	Fraser Street	Brunswick	
135.	House	5	Fraser Street	Brunswick	
136.	House	27	Fraser Street	Brunswick	
137.	Telecom Depot	1	Frith Street	Brunswick	
138.	House	6	Frith Street	Brunswick	
139.	Pascoe Vale Primary School	350-360	Gaffney Street	Pascoe Vale	
140.	Houses (pair)	1 to 3	Gardiner Street	Brunswick	
141.	Shop/factory	23	Glenlyon Road	Brunswick	
142.	Dairy (former)	42	Glenlyon Road	Brunswick	
143.	House (+ shop?)	66	Glenlyon Road	Brunswick	
144.	House	80	Glenlyon Road	Brunswick	
145.	House	124	Glenlyon Road	Brunswick	

Place name		Address	Locality		Notes
146.	House	174	Glenlyon Road	East Brunswick	
147.	House	181	Glenlyon Road	East Brunswick	
148.	House	229	Glenlyon Road	East Brunswick	
149.	House and fence	279	Glenlyon Road	East Brunswick	
150.	Houses (Terrace)	157-165	Glenlyon Road	East Brunswick	
151.	Houses	16-18	Glenlyon Road	Brunswick	
152.	Houses	271-273	Glenlyon Road	East Brunswick	
153.	Shops (2)	33-35	Glenlyon Road	Brunswick	
154.	Shops (2)	49-49A	Glenlyon Road	Brunswick	
155.	Houses	60-62	Glenlyon Road	Brunswick	
156.	Church of Christ	67A	Glenlyon Road	Brunswick	
157.	Houses (pair)	46-48	Gold Street	Brunswick	
158.	House	22	Grantham Street	West Brunswick	
159.	Gronn Place	39-50	Gronn Place	West Brunswick	
160.	House	22	Hanover Street	Brunswick	
161.	House	8	Hardy Street	Brunswick	
162.	Kilparney	24	Heller Street	Brunswick	
163.	House	38	Heller Street	Brunswick	
164.	House	66	Heller Street	West Brunswick	
165.	House	6	Henty Street	Brunswick	
166.	House	56	Hickford Street	East Brunswick	
167.	House	85	Hickford Street	East Brunswick	
168.	House	91	Hickford Street	East Brunswick	
169.	House	102	Hickford Street	East Brunswick	
170.	Stephens & Co. clothing factory	17-25	Hodgson Street	Brunswick	Statement of Significance needs Revision
171.	House	23	Holmes Road	East Brunswick	
172.	House	37	Holmes Street	East Brunswick	
173.	House	39	Holmes Street	East Brunswick	
174.	House	45	Holmes Street	East Brunswick	
175.	House	47	Holmes Street	East Brunswick	

Place name		Address		Locality	Notes
176.	House	69	Hope Street	Brunswick	
177.	Oomah	73	Hope Street	Brunswick	
178.	House	81	Hope Street	Brunswick	
179.	House	94	Hope Street	Brunswick	
180.	House	102	Hope Street	Brunswick	
181.	House & Shop	111	Hope Street	Brunswick	
182.	House	126	Hope Street	Brunswick	
183.	House	128	Hope Street	Brunswick	
184.	House	284	Hope Street	West Brunswick	
185.	Gates	11	Hopetoun Avenue	West Brunswick	
186.	'Uxbridge'	16	Horne Street	Brunswick	
187.	House (Terrace)	17-25	Howard Street	Brunswick	
188.	Houses	7 to 9	Howard Street	Brunswick	
189.	Yorkshire Textile Mills	2 to 4	Inverness Street	East Brunswick	Statement of Significance needs Revision
190.	Balfe Park	54	John Street	East Brunswick	
191.	House (& stables)	13	Jones Street	Brunswick	
192.	House	36	King Street	North Fitzroy	
193.	House	9	Kirkdale Street	East Brunswick	
194.	'Emilleen'	24	Latrobe Street	Brunswick	
195.	House	5	Laura Street	Brunswick	
196.	House	86	Laura Street	Brunswick	
197.	Station Master's House (former)	24	Lorenson Avenue	Coburg North	
198.	Belmount	9	Luscombe Street	Brunswick	
199.	Houses (pair)	23-25	Luscombe Street	Brunswick	
200.	House	47-51	Luscombe Street	Brunswick	
201.	House	14	Lydia Street	Brunswick	
202.	House	96	Lydia Street	Brunswick	
203.	Shop (former Balmoral Knitting Mills)	11	Lygon Street	East Brunswick	Statement of Significance needs Revision

Place name		Address		Locality	Notes
204.	Hotel	101	Lygon Street	East Brunswick	Statement of Significance needs Revision
205.	Red Robin Factory (former)	162	Lygon Street	East Brunswick	
206.	Textile Mill (former)	236	Lygon Street	East Brunswick	
207.	G. Burgin factory	260-274	Lygon Street	East Brunswick	As above
208.	Houses (pair)	31-33	Lygon Street	East Brunswick	
209.	Albion Hall	357-361	Lygon Street	East Brunswick	
210.	Elm (Ulmus procera)	25	Maghull Street	Brunswick	
211.	Merlynston Salvation Army Temple (former)	4	Mathieson Street	Coburg North	
212.	House	27	Merri Street	Brunswick	
213.	House	10	Mitchell Street	Brunswick	
214.	House	14	Mitchell Street	Brunswick	
215.	House	16	Mitchell Street	Brunswick	
216.	House	19	Mitchell Street	Brunswick	
217.	House	28	Mitchell Street	Brunswick	
218.	House	34	Mitchell Street	Brunswick	
219.	House	40	Mitchell Street	Brunswick	
220.	House	64	Mitchell Street	Brunswick	
221.	House	92	Mitchell Street	Brunswick	
222.	House (former)	98	Mitchell Street	Brunswick	
223.	Houses	101-103	Mitchell Street	Brunswick	
224.	House	112	Moreland Road	Brunswick	
225.	Church	384	Moreland Road	West Brunswick	
226.	House (Rosevilla)	572	Moreland Road	West Brunswick	
227.	House	19	Moule Street	West Brunswick	
228.	House	23	Mountfield Street	Brunswick	
229.	House	27	Mountfield Street	Brunswick	

Place name	Address	Locality	Notes
230. Munro Street Uniting Church (former)	153C	Munro Street	Coburg
231. House	34	Murdock Street	Brunswick
232. House	46	Murdock Street	Brunswick
233. House	56	Nicholson Street	East Brunswick
234. House	142	Nicholson Street	East Brunswick
235. House	235	Nicholson Street	East Brunswick
236. United Friendly Societies Dispensary (former)	122-124	Nicholson Street	East Brunswick
237. Street Trees		Orient Grove	Brunswick
238. House	1	Pareora Avenue	East Brunswick
239. House	629	Park Street	Brunswick
240. House	679	Park Street	Brunswick
241. House	683	Park Street	Brunswick
242. House	835	Park Street	Brunswick
243. Janet Hillman Reserve		Park Street	East Brunswick
244. House	7	Parkview Avenue	East Brunswick
245. House	114-116	Pearson Street	West Brunswick
246. House	16	Pitt Street	Brunswick
247. House	9	Queen Street	East Brunswick
248. House	23	Queen Street	East Brunswick
249. House	68	Rose Street	Brunswick
250. House	20	Rupert Street	East Brunswick
251. House	44	Shamrock Street	West Brunswick
252. House	1	South Daly Street	West Brunswick
253. House	180	Stewart Street	East Brunswick
254. House	183	Stewart Street	East Brunswick
255. House	188	Stewart Street	East Brunswick
256. House	230	Stewart Street	East Brunswick
257. State Savings Bank	840	Sydney Road	Brunswick

Place name	Address	Locality	Notes
of Victoria (former)			
258. Joseph Allison Funeral Parlour	786-788	Sydney Road	Brunswick
259. Bank of New South Wales? (former)	854-856	Sydney Road	Brunswick
260. House	98	Tinning Street	Brunswick
261. House	16	Tudor Street	Glenroy
262. Shop	80-82	Union Street	Brunswick
263. House	28	Victoria Street	East Brunswick
264. House	31	Victoria Street	East Brunswick
265. House, front fence and hedge	85	Victoria Street	East Brunswick
266. Fleming Park	96	Victoria Street	East Brunswick
267. House	137	Victoria Street	Brunswick
268. Seaforth	159	Victoria Street	Brunswick
269. House	205	Victoria Street	Brunswick
270. Scout Hall (former)	273	Victoria Street	Brunswick
271. Shop	384	Victoria Street	Brunswick
272. House	496	Victoria Street	West Brunswick
273. House	581	Victoria Street	West Brunswick
274. Victoria Hotel	380-382	Victoria Street	Brunswick
275. House	9	Waxman Parade	West Brunswick
276. House	18	Waxman Parade	West Brunswick
277. House	2	West Street	Brunswick
278. House	5	West Street	Brunswick
279. House	29	Westbourne Street	Brunswick
280. Caledonian Hotel (former)	211	Weston Street	East Brunswick
281. House	36	White Street	North Fitzroy
282. House	12	Wyuna Street	West Brunswick

A.3 Local interest or not significant

The following places do not meet the threshold for local significance or are not significant:

Place name	Address		Locality
1. House	7	Aberdeen Street	Brunswick
2. House	3	Akeroa Avenue	East Brunswick
3. Shop	281	Albert Street	Brunswick
4. House	343	Albert Street	Brunswick
5. Houses (pair)	227-229	Albert Street	Brunswick
6. Houses	29-33	Albert Street	Brunswick
7. House	102	Albion Street	Brunswick
8. House	104	Albion Street	Brunswick
9. House	172	Albion Street	Brunswick
10. House	176	Albion Street	Brunswick
11. House	391	Albion Street	Brunswick
12. House	398	Albion Street	West Brunswick
13. HCV Fowler concrete house	537	Albion Street	West Brunswick
14. HCV Fowler concrete house	539	Albion Street	West Brunswick
15. House	542	Albion Street	West Brunswick
16. HCV Fowler concrete house	549	Albion Street	West Brunswick
17. HCV Fowler concrete house	551	Albion Street	West Brunswick
18. HCV Fowler concrete house	555	Albion Street	West Brunswick
19. House	557	Albion Street	West Brunswick
20. House	559	Albion Street	West Brunswick
21. HCV Fowler concrete house	561	Albion Street	West Brunswick
22. Butlers brickworks (former)	9 to 23	Albion Street	East Brunswick
23. House	322	Amess Street	East Brunswick
24. House	324	Amess Street	East Brunswick
25. Mutton Reserve	Off	Argyle & Lorne Streets	Fawkner

Place name	Address		Locality
26. House	7	Arnold Street	East Brunswick
27. House & Dairy or Shop (former)	1	Audley Street	Coburg
28. Shop (former) & Dwelling	5	Audley Street	Coburg
29. House	54	Austral Avenue	Brunswick
30. House (Closer Settlement)	3	Balfe Crescent	Brunswick
31. House (Closer Settlement)	5	Balfe Crescent	Brunswick
32. House	39	Balmoral Avenue	East Brunswick
33. House	11	Bank Street	Brunswick
34. House	14	Bank Street	Brunswick
35. House	20	Bank Street	Brunswick
36. House	175	Barkly Street	Brunswick
37. House	195	Barkly Street	Brunswick
38. House	197	Barkly Street	Brunswick
39. House	232	Barkly Street	Brunswick
40. House	246	Barkly Street	Brunswick
41. Houses (pair)	134-136	Barkly Street	Brunswick
42. Houses (Terrace)	163-169	Barkly Street	Brunswick
43. Houses (pair)	178-180	Barkly Street	Brunswick
44. Precinct - Barkly Street East (Extension)	19-35	Barkly Street	East Brunswick
45. Houses (Terrace)	208-210	Barkly Street	Brunswick
46. House	1	Barningham Street	Brunswick
47. House	4	Barrow Street	Brunswick
48. House	25	Barrow Street	Brunswick
49. House	43	Barrow Street	Coburg
50. House	42	Belfast Road	Brunswick
51. Church of Christ	146	Bell Street	Coburg
52. Salvation Army Hall and Citadel	228	Bell Street	Coburg
53. House	319	Bell Street	Pascoe Vale South
54. Shop	329	Bell Street	Pascoe Vale South

Place name	Address	Locality
55. Shop	331 Bell Street	Pascoe Vale South
56. Shops	225-233 Bell Street	Coburg
57. Bank (former)	364-366 Bell Street	Pascoe Vale South
58. Shops	390-400 Bell Street	Pascoe Vale South
59. Shops	412-414 Bell Street	Pascoe Vale South
60. Bell Street Bridge	Bell Street	Coburg
61. De Chene Reserve & Connolly Ave Reserve	Bell Street to Murray Road	Coburg
62. House	36 Blair Street	Brunswick
63. House	172 Blyth Street	East Brunswick
64. House	174 Blyth Street	East Brunswick
65. House	8 Breese Street	Brunswick
66. House	9 Bruce Street	Brunswick
67. House	80 Brunswick Road	Brunswick
68. House	94 Brunswick Road	Brunswick
69. House	102 Brunswick Road	Brunswick
70. House	108 Brunswick Road	Brunswick
71. House	122 Brunswick Road	Brunswick
72. William Apps Workshop (former)	190 Brunswick Road	Brunswick
73. House	272 Brunswick Road	Brunswick
74. House	273 Brunswick Road	Brunswick
75. House	396 Brunswick Road	West Brunswick
76. House	451 Brunswick Road	West Brunswick
77. House	459 Brunswick Road	West Brunswick
78. House	479 Brunswick Road	West Brunswick
79. Latoof & Callil factory (former)	17-27 Brunswick Road	East Brunswick
80. Patrick Sheehan Motor Workshop (former)	184-186 Brunswick Road	Brunswick
81. Precinct - Burchett Street	Burchett Street	Brunswick
82. House	31 Burnell Street	West Brunswick
83. House	2 Canning Street	East Brunswick

Place name	Address	Locality
84. House	35 Cassels Road	Brunswick
85. House	68 Cassels Road	Brunswick
86. House (Terrace)	11 Chambers Street	Coburg
87. House (Terrace)	13 Chambers Street	Coburg
88. House (Terrace)	15 Chambers Street	Coburg
89. House (Terrace)	17 Chambers Street	Coburg
90. House (Terrace)	19 Chambers Street	Coburg
91. House (Terrace)	21 Chambers Street	Coburg
92. House	83 Chapman Street	Oak Park
93. House	42 Collier Crescent	Brunswick
94. House	28 Cook Street	West Brunswick
95. House	30 Cook Street	West Brunswick
96. Precinct - Crisp Avenue	Crisp Avenue	Brunswick
97. Rogers Reserve	Cumberland Road	Pascoe Vale
98. HCV Fowler concrete house	6 Curtin Avenue	West Brunswick
99. HCV Fowler concrete house	7 Curtin Avenue	West Brunswick
100. HCV Fowler concrete house	8 Curtin Avenue	West Brunswick
101. HCV Fowler concrete house	9 Curtin Avenue	West Brunswick
102. HCV Fowler concrete house	10 Curtin Avenue	West Brunswick
103. HCV Fowler concrete house	11 Curtin Avenue	West Brunswick
104. HCV Fowler concrete house	12 Curtin Avenue	West Brunswick
105. HCV Fowler concrete house	13 Curtin Avenue	West Brunswick
106. HCV Fowler concrete house	14 Curtin Avenue	West Brunswick
107. HCV Fowler concrete house	15 Curtin Avenue	West Brunswick
108. HCV Fowler concrete house	16 Curtin Avenue	West Brunswick
109. HCV Fowler	17 Curtin Avenue	West Brunswick

Place name	Address		Locality
concrete house			
110. HCV Fowler concrete house	18	Curtin Avenue	West Brunswick
111. HCV Fowler concrete house	19	Curtin Avenue	West Brunswick
112. HCV Fowler concrete house	20	Curtin Avenue	West Brunswick
113. HCV Fowler concrete house	21	Curtin Avenue	West Brunswick
114. HCV Fowler concrete house	22	Curtin Avenue	West Brunswick
115. HCV Fowler concrete house	23	Curtin Avenue	West Brunswick
116. HCV Fowler concrete house	24	Curtin Avenue	West Brunswick
117. HCV Fowler concrete house	25	Curtin Avenue	West Brunswick
118. HCV Fowler concrete house	27	Curtin Avenue	West Brunswick
119. HCV Fowler concrete house	29	Curtin Avenue	West Brunswick
120. HCV Fowler concrete house	31	Curtin Avenue	West Brunswick
121. House	4	Dale Avenue	Pascoe Vale
122. Allendale	10	Dale Avenue	Pascoe Vale
123. House	12	Dale Avenue	Pascoe Vale
124. ATC Cook Reserve		Daley Street	Glenroy
125. House	22	Daly Street	Brunswick
126. House	13	Davies Street	Brunswick
127. House	62	Davies Street	Brunswick
128. House	100	Davies Street	Brunswick
129. House	104	Davies Street	Brunswick
130. House	26	Davison Street	Brunswick
131. House (Closer Settlement)	236	Dawson Street	Brunswick
132. House	11	Deakin Street	East Brunswick
133. House	13	Deakin Street	East Brunswick
134. St Linus'		Delta Avenue	Coburg North

Place name		Address		Locality
Anglican Church				
135.	House	27	Denman Street	Brunswick
136.	House	1	Derby Street	Pascoe Vale
137.	House	20	Dods Street	Brunswick
138.	House	27	Dods Street	Brunswick
139.	House	29	Dods Street	Brunswick
140.	House	33	Dods Street	Brunswick
141.	Staley & Staley Mill complex	1 to 3	Dods Street	Brunswick
142.	House	85	Donald Street	Brunswick
143.	House	132	Donald Street	Brunswick
144.	City of Brunswick Electricity Supply transformer station (former)	174A	Donald Street	East Brunswick
145.	Church (former)	6	Dorset Road	Pascoe Vale
146.	Precinct - Dunstan Avenue		Dunstan Avenue	Brunswick
147.	House	144	Edward Street	Brunswick
148.	House	149	Edward Street	Brunswick
149.	House	158	Edward Street	Brunswick
150.	House	157-159	Edward Street	Brunswick
151.	Precinct - Edward Street East		Edward Street	East Brunswick
152.	House	10	Eric Street	Coburg
153.	House	25	Evans Street	Brunswick
154.	House	51	Evans Street	Brunswick
155.	House	52	Evans Street	Brunswick
156.	House	94	Evans Street	Brunswick
157.	House	122	Evans Street	Brunswick
158.	House	1	Ewing Street	Brunswick
159.	House & stables	5	Ewing Street	Brunswick
160.	House	16	Ewing Street	Brunswick
161.	House	1	Fallon Street	Brunswick
162.	House	3	Fallon Street	Brunswick

Place name		Address		Locality
163.	House	6	Fallon Street	Brunswick
164.	House	8	Fitzgibbon Avenue	West Brunswick
165.	House	8	Fraser Street	Brunswick
166.	House	9	Fraser Street	Brunswick
167.	House	23	Fraser Street	Brunswick
168.	House	28	Fraser Street	Brunswick
169.	House	30	Fraser Street	Brunswick
170.	Houses (2)	19-21	Fraser Street	Brunswick
171.	Kaora Worsted Mill	45	Gaffney Street	Coburg
172.	House	7	Garden Street	Brunswick
173.	House	31	Glenlyon Road	Brunswick
174.	House	110	Glenlyon Road	Brunswick
175.	House	126	Glenlyon Road	Brunswick
176.	Houses (3)	112-116	Glenlyon Road	Brunswick
177.	Precinct - Glenlyon Road East		Glenlyon Road	East Brunswick
178.	Northern Golf Club	97	Glenroy Road	Glenroy
179.	House	20	Grantham Street	West Brunswick
180.	House	23	Grantham Street	West Brunswick
181.	House	26	Grantham Street	West Brunswick
182.	House & shopfront	35	Grantham Street	West Brunswick
183.	House	63	Grantham Street	West Brunswick
184.	House	65	Grantham Street	West Brunswick
185.	House	19-19A	Grantham Street	West Brunswick
186.	House	9	Gray Street	Brunswick
187.	Houses	10 to 12	Hamilton Street	Brunswick
188.	Houses	15-17	Hamilton Street	Brunswick
189.	House	64	Hanover Street	Brunswick
190.	House	6	Harding Street	Coburg
191.	House	8	Harding Street	Coburg
192.	House	27	Heller Street	Brunswick
193.	House	45	Heller Street	West Brunswick

Place name		Address		Locality
194.	House	61	Heller Street	West Brunswick
195.	House	62	Heller Street	West Brunswick
196.	House	70	Heller Street	West Brunswick
197.	House	21	Henderson Street	West Brunswick
198.	House	16	Holloway Street	Brunswick
199.	House	32	Holloway Street	Brunswick
200.	Shops	77-79	Holmes Road	East Brunswick
201.	House	57	Hope Street	Brunswick
202.	House	78	Hope Street	Brunswick
203.	House	119	Hope Street	Brunswick
204.	House	124	Hope Street	Brunswick
205.	House	136	Hope Street	Brunswick
206.	House	138	Hope Street	Brunswick
207.	House	152	Hope Street	Brunswick
208.	House	191	Hope Street	West Brunswick
209.	Shop	195	Hope Street	West Brunswick
210.	House	2	Hopetoun Avenue	West Brunswick
211.	House	4	Hopetoun Avenue	West Brunswick
212.	House	8	Hopetoun Avenue	West Brunswick
213.	House	10	Hopetoun Avenue	West Brunswick
214.	House	12	Hopetoun Avenue	West Brunswick
215.	House	14	Hopetoun Avenue	West Brunswick
216.	House	18	Horne Street	Brunswick
217.	House	22	Howard Street	Brunswick
218.	House	3	Howson Street	West Brunswick
219.	Avoca	38	Hudson Street	Coburg
220.	Montecassino Knitting Mills	82-94	John Street	East Brunswick
221.	House	11	Jones Street	Brunswick
222.	House	15	Jones Street	Brunswick
223.	House	17	Jones Street	Brunswick
224.	House	18	Kendall Street	Coburg
225.	House	22	Kendall Street	Coburg
226.	Kent Road	137	Kent Road	Pascoe Vale

Place name		Address		Locality
Uniting Church				
227.	House (HCV)	2	Kitchener Street	West Brunswick
228.	House (HCV)	4	Kitchener Street	West Brunswick
229.	House (HCV)	6	Kitchener Street	West Brunswick
230.	House (HCV)	8	Kitchener Street	West Brunswick
231.	House (HCV)	10	Kitchener Street	West Brunswick
232.	House (HCV)	12	Kitchener Street	West Brunswick
233.	House (HCV)	14	Kitchener Street	West Brunswick
234.	House (HCV)	16	Kitchener Street	West Brunswick
235.	House (HCV)	18	Kitchener Street	West Brunswick
236.	House (HCV)	20	Kitchener Street	West Brunswick
237.	House (HCV)	22	Kitchener Street	West Brunswick
238.	House (HCV)	24	Kitchener Street	West Brunswick
239.	House	24	Larnoo Avenue	West Brunswick
240.	House	21	Laura Street	Brunswick
241.	Terrace	72	Laura Street	Brunswick
242.	Sandstone Factory (former)	6	Lens Street	Coburg
243.	House	15	Linden Street	East Brunswick
244.	House	17	Linden Street	East Brunswick
245.	House	1	Little Gold Street	Brunswick
246.	House	15	Little Gold Street	Brunswick
247.	House	23	Little Gold Street	Brunswick
248.	House	25	Little Gold Street	Brunswick
249.	House	27	Little Gold Street	Brunswick
250.	Houses	16-18	Lord Street	Brunswick
251.	House	45	Luscombe Street	Brunswick
252.	House	5	Lydia Street	Brunswick
253.	House	8	Lydia Street	Brunswick
254.	Terrace house	9	Lydia Street	Brunswick
255.	House	21	Lydia Street	Brunswick
256.	House	29	Lydia Street	Brunswick
257.	House	46	Lydia Street	Brunswick
258.	Terrace	82	Lydia Street	Brunswick

Place name		Address		Locality
259.	Textile Mill	240	Lygon Street	East Brunswick
260.	Buckstein Hosiery/ Castle Knitwear factory	326-348	Lygon Street	East Brunswick
261.	Precinct - Maghull Street		Maghull Street	East Brunswick
262.	Peerless Silk Mills	1	Manallack Street	Brunswick
263.	House	37	Mattingley Crescent	West Brunswick
264.	House	42	Mattingley Crescent	West Brunswick
265.	House	1	Mayfield Avenue	Brunswick
266.	House	2	McColl Street	West Brunswick
267.	House	4	McColl Street	West Brunswick
268.	House	9	McColl Street	West Brunswick
269.	House	17	McLean Street	West Brunswick
270.	House	40	Melville Road	West Brunswick
271.	House	23	Merri Street	Brunswick
272.	Jackson & Eckersell factory	16-20	Michael Street	Brunswick
273.	House	41	Middle Street	Glenroy
274.	House	15	Minnie Street	Brunswick
275.	House (Terrace)	75	Mitchell Street	Brunswick
276.	House	95	Mitchell Street	Brunswick
277.	House	100	Mitchell Street	Brunswick
278.	Beaufort house	13	Moascar Street	Pascoe Vale South
279.	Campbell Reserve		Moore Street	Coburg East
280.	House	114	Moreland Road	Brunswick
281.	House	220	Moreland Road	Brunswick
282.	House	240	Moreland Road	Brunswick
283.	House	255	Moreland Road	Coburg
284.	House	383	Moreland Road	Coburg
285.	House	390	Moreland Road	West Brunswick
286.	Creek Reserve		Moreland Road	Coburg East
287.	House	62	Mountfield Street	Brunswick
288.	House	4	Murray Street	West Brunswick

Place name		Address	Locality	
289.	House	43	Murray Street	West Brunswick
290.	House	46	Murray Street	West Brunswick
291.	House	50	Murray Street	West Brunswick
292.	House	19	Newman Street	Brunswick
293.	House	21	Newman Street	Brunswick
294.	House	23	Newman Street	Brunswick
295.	House	27	Newman Street	Brunswick
296.	House	33	Newman Street	Brunswick
297.	House	41	Newman Street	Brunswick
298.	House	49	Newman Street	Brunswick
299.	House	51	Newman Street	Brunswick
300.	House	53	Newman Street	Brunswick
301.	House	55	Newman Street	Brunswick
302.	Islamic Faith Mosque	31	Nicholson Street	Coburg
303.	Shop	45	Nicholson Street	East Brunswick
304.	Shop	47	Nicholson Street	East Brunswick
305.	House	70	Nicholson Street	Coburg
306.	House	91	Nicholson Street	Coburg
307.	Dairy and Milk Bar	136	Nicholson Street	East Brunswick
308.	Church	150	Nicholson Street	East Brunswick
309.	House	173	Nicholson Street	East Brunswick
310.	Houses	138-140	Nicholson Street	East Brunswick
311.	Shops (4)	189-195	Nicholson Street	Brunswick
312.	Precinct - Nicholson Street North		Nicholson Street	Brunswick
313.	House	20	North Street	Brunswick
314.	House	28	North Street	Brunswick
315.	Warder's Cottage (former)	26	O'Hea Street	Coburg
316.	Warder's Cottage (former)	28	O'Hea Street	Coburg
317.	Shop & House	84	O'Hea Street	Coburg
318.	Comic Court	246	O'Hea Street	Coburg

Place name		Address		Locality
319.	House	247	O'Hea Street	Coburg
320.	House	5	Orari Avenue	East Brunswick
321.	House	1	Park Street	Coburg
322.	House	2	Park Street	Coburg
323.	House	4	Park Street	Coburg
324.	House	5	Park Street	Coburg
325.	House	6	Park Street	Coburg
326.	House	9	Park Street	Coburg
327.	House	11	Park Street	Coburg
328.	House	12	Park Street	Coburg
329.	House	13	Park Street	Coburg
330.	House	14	Park Street	Coburg
331.	House	15	Park Street	Coburg
332.	House	16	Park Street	Coburg
333.	House	609	Park Street	Brunswick
334.	House	649	Park Street	Brunswick
335.	Houses (pair)	603-605	Park Street	Brunswick
336.	Houses (Terrace)	641-645	Park Street	Brunswick
337.	Houses (Terrace)	663-665	Park Street	Brunswick
338.	Westbreen School (removal)		Pascoe Street	Coburg
339.	House	36	Passfield Street	West Brunswick
340.	HCV Duplex	35	Peacock Street	West Brunswick
341.	HCV Duplex	37	Peacock Street	West Brunswick
342.	HCV Duplex	39	Peacock Street	West Brunswick
343.	HCV Duplex	41	Peacock Street	West Brunswick
344.	HCV Duplex	43	Peacock Street	West Brunswick
345.	HCV Duplex	45	Peacock Street	West Brunswick
346.	House	136	Pearson Street	West Brunswick
347.	House	140	Pearson Street	West Brunswick
348.	House	142	Pearson Street	West Brunswick
349.	House	147	Pearson Street	West Brunswick
350.	House	106-108	Pearson Street	West Brunswick

Place name		Address		Locality
351.	Precinct - Pearson Street		Pearson Street	West Brunswick
352.	House	19	Piera Street	East Brunswick
353.	House	28	Piera Street	East Brunswick
354.	Precinct - Piera Street		Piera Street	East Brunswick
355.	House	11	Prentice Street	Brunswick
356.	House	16	Preston Street	Coburg
357.	House	24	Preston Street	Coburg
358.	House	32	Preston Street	Coburg
359.	House	34	Preston Street	Coburg
360.	House	36	Preston Street	Coburg
361.	House	40	Preston Street	Coburg
362.	Policeman's House (former)	Cnr. (91?)	Queens Road & Princes Street	Fawkner
363.	Unisville	7	Rennie Street	Coburg
364.	Maisonette	9	Rennie Street	Coburg
365.	Maisonette	11	Rennie Street	Coburg
366.	Avila	19	Rennie Street	Coburg
367.	House	29	Rennie Street	Coburg
368.	Duplex	50	Rennie Street	Coburg
369.	House	55	Rennie Street	Coburg
370.	House	61	Rennie Street	Coburg
371.	Duplex	92	Rennie Street	Coburg
372.	House	93	Rennie Street	Coburg
373.	Duplex	116	Rennie Street	Coburg
374.	Duplex	118	Rennie Street	Coburg
375.	Duplex	50A	Rennie Street	Coburg
376.	Duplex	92A	Rennie Street	Coburg
377.	House (Terrace - pair)	20	Reynard Street	Coburg
378.	House (Terrace - pair)	22	Reynard Street	Coburg
379.	House (Terrace - group)	24	Reynard Street	Coburg
380.	House (Terrace	26	Reynard Street	Coburg

Place name	Address	Locality
- group)		
381. House (Terrace - group)	28 Reynard Street	Coburg
382. House (Terrace - group)	30 Reynard Street	Coburg
383. House (Terrace - group)	32 Reynard Street	Coburg
384. House (Terrace - group)	34 Reynard Street	Coburg
385. House (Terrace - group)	36 Reynard Street	Coburg
386. House (Terrace - group)	38 Reynard Street	Coburg
387. Garage	167 Reynard Street	Coburg
388. Shop	270 Reynard Street	Coburg
389. MMBW benchmarks	Reynard Street	Coburg
390. Beaufort house	13 Reynolds Parade	Pascoe Vale South
391. House	1 Richards Street	Coburg
392. Braehead	14 Richards Street	Coburg
393. House	1 Rodda Street	Coburg
394. House	3 Rodda Street	Coburg
395. House	5 Rodda Street	Coburg
396. House	7 Rodda Street	Coburg
397. House	9 Rodda Street	Coburg
398. House	11 Rodda Street	Coburg
399. House	13 Rodda Street	Coburg
400. House	15 Rodda Street	Coburg
401. St Fidelis' Catholic Primary School	48 Saunders Street	Coburg
402. Jenkins Boot Factory (former)	20 Sedgman Street	East Brunswick
403. Linuby	2 Shaftsbury Street	Coburg
404. House	86 Shaftsbury Street	Coburg
405. House	32 Smith Street	West Brunswick
406. House	60 Smith Street	West Brunswick

Place name		Address	Locality
407.	House	1 South Audley Street	Brunswick
408.	House	72 St Phillip Street	East Brunswick
409.	House	7 Staples Court	Glenroy
410.	House	18 Station Street	Coburg
411.	House	27 Station Street	Coburg
412.	House	5 Sterling Street	Brunswick
413.	House	77 Stewart Street	Brunswick
414.	House	204 Stewart Street	East Brunswick
415.	Houses	172-174 Stewart Street	East Brunswick
416.	Inverill	5 Sutherland Street	Brunswick
417.	House	30 Sutherland Street	Brunswick
418.	Shop	16 Sydney Road	Coburg
419.	Moreland Salvation Army	100 Sydney Road	Coburg
420.	Manchester Unity I.O.O.F.	218 Sydney Road	Coburg
421.	Post Office Hotel	231 Sydney Road	Coburg
422.	Shop	425 Sydney Road	Coburg
423.	Shop	433 Sydney Road	Coburg
424.	Shop	476 Sydney Road	Coburg
425.	Pharmacy (former)	489 Sydney Road	Coburg
426.	Shop	490 Sydney Road	Coburg
427.	Shop	492 Sydney Road	Coburg
428.	Summer World Hotel	502 Sydney Road	Coburg
429.	Shop (former house)	555 Sydney Road	Coburg
430.	King Khalid Islamic School	653 Sydney Road	Coburg
431.	Shops (3)	10 to 14 Sydney Road	Coburg
432.	W E Cash factory	200-216 Sydney Road	Coburg
433.	Wreckair	224-246 Sydney Road	Coburg
434.	Shops	412-414 Sydney Road	Coburg

Place name		Address		Locality
435.	Warren's Corner	491-495	Sydney Road	Coburg
436.	Shops	743-745	Sydney Road	Brunswick
437.	Moreland High School		The Avenue	Coburg
438.	Merri Creek Reserves (east & west sides)		The Grove to Harding Street	Coburg East
439.	House	5	Timaru Avenue	East Brunswick
440.	House	118	Tinning Street	Brunswick
441.	House	122	Tinning Street	Brunswick
442.	House	128	Tinning Street	Brunswick
443.	House	132	Tinning Street	Brunswick
444.	House	134	Tinning Street	Brunswick
445.	House	139	Tinning Street	Brunswick
446.	House	141	Tinning Street	Brunswick
447.	House	145	Tinning Street	Brunswick
448.	House	147	Tinning Street	Brunswick
449.	House	149	Tinning Street	Brunswick
450.	House	151	Tinning Street	Brunswick
451.	House	38-40	Tinning Street	Brunswick
452.	House	340-342	to Brunswick Road	Brunswick
453.	House	10	Trinity Street	Brunswick
454.	House	7	Turnbull Court	West Brunswick
455.	Baby Health Centre		Turner Street (cnr O'hea Street)	Pascoe Vale South
456.	Lane Shirt Factory	1	Union Street	Brunswick
457.	House	8	Union Street	Brunswick
458.	House	149	Union Street	Brunswick
459.	Gordon Bros Refrigeration Engineers	110-120	Union Street	Brunswick
460.	House	135-137	Union Street	Brunswick
461.	House	23-29	Union Street	Brunswick
462.	Houses (2)	63-65	Union Street	Brunswick
463.	Beaufort house	5	Vaux Street	Pascoe Vale South

Place name		Address		Locality
464.	House	161	Victoria Street	Brunswick
465.	House	163	Victoria Street	Brunswick
466.	Ingot Metals (+ rear)	430	Victoria Street	Brunswick
467.	Olsen Clothing Factory	437	Victoria Street	Brunswick
468.	House	500	Victoria Street	West Brunswick
469.	Cottage	551	Victoria Street	West Brunswick
470.	House	557	Victoria Street	West Brunswick
471.	Houses	227-229	Victoria Street	Brunswick
472.	Houses (3)	49-53	Victoria Street	Brunswick and Coburg
473.	House	1	Wallace Street	West Brunswick
474.	House	2	Wallace Street	West Brunswick
475.	House	4	Wallace Street	West Brunswick
476.	House	5	Wallace Street	West Brunswick
477.	House	6	Wallace Street	West Brunswick
478.	House	7	Wallace Street	West Brunswick
479.	House	18	Wallace Street	West Brunswick
480.	House	28	Wallace Street	West Brunswick
481.	House	57	Walsh Street	Coburg
482.	House	1	Waxman Parade	West Brunswick
483.	House	3	Waxman Parade	West Brunswick
484.	Albion Clothing Co.	29 to 31	Weston Street	Brunswick
485.	House	42	Whitby Street	West Brunswick
486.	House	10	Wilson Avenue	Brunswick
487.	Finchett's Shirt Factory	25	Wilson Street	Brunswick

A.4 Demolished places

The following places have been demolished or removed.

Place name	Address	Locality
1. Australian Consolidated Hosiery factory	480 Albion Street	West Brunswick
2. Bakers Road Tram Terminus	Bakers Road	Coburg North
3. Bakery	32 Grantham Street	West Brunswick
4. Bates & Co. Stove Factory	Little Miller Street	East Brunswick
5. Beaufort house	11 Vaux Street	Pascoe Vale South
6. Beaufort house	13 Le Cateau Street	Pascoe Vale South
7. Beaufort house	15 Gallipoli Parade	Pascoe Vale South
8. Beaufort house	27 Gallipoli Parade	Pascoe Vale South
9. Beaufort house	3 Moascar Street	Pascoe Vale South
10. Beaufort house	9 Le Cateau Street	Pascoe Vale South
11. Bluestone ruin (rear of service station)	273 Elizabeth Street	Coburg North
12. Coburg Post Office	481 to 485 Sydney Road	Coburg
13. Commonwealth Dyers Association	519-547 Sydney Road	Coburg
14. Congleton's Hardware Store	376 to 380 Sydney Road	Coburg
15. Cottage	17 Preston Street	Coburg
16. Cottage	48 Harrison Street	Brunswick
17. Dawn Manufacturing Co.	31 to 33 Service Street	Coburg
18. East Brunswick High School	232 Albert Street	Brunswick
19. Elroy	28 Breese Street	Brunswick
20. Factory	191 Lygon Street	East Brunswick
21. Glenroy	138 Albert Street	Brunswick
22. Hall (rear of church)	118 to 120 Nicholson Street	Coburg
23. Hilton Knitting Mills	51 Normanby Street	Coburg
24. Horseshoe Nail Works	27 Tinning Street	Brunswick
25. House	1 Sussex Street	Coburg
26. House	102 Stewart Street	Brunswick
27. House	11 Deans Street	Coburg
28. House	122 Albion Street	Brunswick

Place name	Address	Locality
29. House	130 Hope Street	Brunswick
30. House	136 Edward Street	Brunswick
31. House	142 Barkly Street	Brunswick
32. House	144 Barkly Street	Brunswick
33. House	144 Glenlyon Road	Brunswick
34. House	146 Glenlyon Road	Brunswick
35. House	15 Station Road	Oak Park
36. House	153 Tinning Street	Brunswick
37. House	16 Thomas Street	Brunswick
38. House	17 to 21 Garnet Street	Brunswick
39. House	175 Union Street	West Brunswick
40. House	179 Victoria Street	Brunswick
41. House	2 Hamilton Street	Brunswick
42. House	207 Edward Street	East Brunswick
43. House	21 McLean Street	West Brunswick
44. House	212 Stewart Street	East Brunswick
45. House	22 Dale Avenue	Pascoe Vale
46. House	22 Preston Street	Coburg
47. House	23 Dunstan Avenue	Brunswick
48. House	26 Cook Street	West Brunswick
49. House	26 Hopetoun Avenue	West Brunswick
50. House	27 Queen Street	East Brunswick
51. House	28 Peacock Street	West Brunswick
52. House	28 Wilson Avenue	Brunswick
53. House	3 Park Street	Coburg
54. House	32 Wallace Street	West Brunswick
55. House	331 Victoria Street	Brunswick
56. House	38 Newman Street	Brunswick
57. House	388 Moreland Road	West Brunswick
58. House	39 Howard Street	Brunswick
59. House	41 Hanover Street	Brunswick
60. House	42 Donne Street	Coburg
61. House	42 Murray Street	West Brunswick
62. House	42 Preston Street	Coburg

Place name	Address	Locality
63. House	42 Westbourne Street	Brunswick
64. House	46 Preston Street	Coburg
65. House	47 Newman Street	Brunswick
66. House	5 Dale Avenue	Pascoe Vale
67. House	5 Luscombe Street	Brunswick
68. House	5 Turnbull Court	West Brunswick
69. House	50 Brunswick Road	East Brunswick
70. House	53 Murray Street	West Brunswick
71. House	54 Barkly Street	East Brunswick
72. House	540 Albion Street	West Brunswick
73. House	6 Pitt Street	Brunswick
74. House	7 Gardiner Street	Brunswick
75. House	70 Hope Street	Brunswick
76. House	75 Victoria Street	East Brunswick
77. House	8 North Street	Brunswick
78. House	8 Rodda Street	Coburg
79. House	9 Jones Street	Brunswick
80. House (Closer Settlement)	31 Eggington Street	West Brunswick
81. House	9 Little Gold Street	Brunswick
82. Kitchener Hall	24 Peacock Street	West Brunswick
83. Lacey Rosando Factory	498 Albion Street	West Brunswick
84. MMTB Tram Depot	13-21 Nicholson Street	Coburg
85. Murray Confectionery Works	74 De Carle Street	Brunswick
86. Oakley's Foundry	128 Weston Street	Brunswick
87. Railway worker's cottage	2 Station Street	Coburg
88. Row of shops	235 to 241 Melville Road	Pascoe Vale South
89. St George's Anglican Church	570 Bell Street	Pascoe Vale
90. State Savings Bank of Victoria	337 Bell Street	Pascoe Vale South
91. Street Trees	Linda Street	Coburg
92. Williams Iron Works	7 Weston Street	Brunswick

A.5 Potential Aboriginal significance

The following places are of potential aboriginal cultural significance:

Place name	Address	Locality
1. Barry Road Gorge 1		Broadmeadows
2. Barry Road Gorge 2		Broadmeadows
3. Barry Road Gorge 3		Broadmeadows
4. Barry Road Gorge 4		Broadmeadows
5. Barry Road Gorge 5		Broadmeadows
6. Central Creek 2		Broadmeadows
7. Cooper Street 3		Broadmeadows
8. Edgars Creek 1 & 2		Coburg
9. Mahoneys Road 1		Broadmeadows

APPENDIX B – DEFINITIONS & RNE CRITERIA

B.1 Definitions

Term	Meaning
Burra Charter	<p>The <i>Burra Charter</i> is the short name given to the <i>Australian ICOMOS Charter for the Conservation of Places of Cultural Significance</i>, which was developed by Australia ICOMOS at a meeting in 1979 in the historic South Australian mining town of Burra. It is now widely accepted as the basis for cultural heritage management in Australia.</p> <p>The Burra Charter may be applied to a wide range of places - an archaeological site, a town, building or landscape and defines various terms and identifies principles and procedures that must be observed in conservation work.</p> <p>Although the Burra Charter was drafted by heritage professionals, anyone involved in the care of heritage items and places may use it to guide conservation policy and practice.</p>
Conservation	<p><i>Conservation</i> means all the processes of looking after a place so as to retain its <i>cultural significance</i>.</p>
Cultural significance	<p>In accordance with the Burra Charter, <i>Cultural significance</i> means aesthetic, historic, scientific, social or spiritual value for past, present or future generations.</p> <p>Cultural significance is embodied in the <i>place</i> itself, its <i>fabric, setting, use associations, meanings, records, related places</i> and <i>related objects</i>.</p>
Heritage place and Heritage Precinct	<p>In accordance with the Burra Charter, <i>Place</i> means site, area, land, landscape, building or other work, group of building or other work, and may include components, contents, spaces and views.</p> <p>For the purposes of the Moreland Heritage Review, the term <i>heritage place</i> has been used to describe an individual heritage place comprising one property. It may, in some situations, also describe a small group of properties if the buildings are attached or related in some way (e.g. a terrace house row).</p> <p>The term <i>heritage precinct</i> refers to a group of heritage places that form an identified precinct</p>
ICOMOS	<p><i>ICOMOS</i> (International Council on Monuments and Sites) is a non-governmental professional organisation formed in 1965. ICOMOS is primarily concerned with the philosophy, terminology, methodology and techniques of cultural heritage conservation and is closely linked to UNESCO.</p>
Post contact	<p><i>Post-contact</i> means the period after first contact between indigenous and non-indigenous (sometimes referred to as</p>

	'European') individuals or communities.
Register of the National Estate (RNE) criteria	The <i>RNE criteria</i> are used to assess whether a place has significant cultural heritage values. A copy of the RNE criteria is provided at Appendix B.2.

B.2 RNE Criteria

Criterion A.4

Importance for association with events, developments or cultural phases which have had a significant role in the human occupation and evolution of the nation, State, region or community.

Criterion B.2

Importance in demonstrating a distinctive way of life, custom, process, land-use, function or design no longer practised, in danger of being lost, or of exceptional interest.

Criterion C.2

Importance for information contributing to a wider understanding of the history of human occupation of Australia.

Criterion D.2

Importance in demonstrating the principal characteristics of the range of human activities in the Australian environment (including way of life, custom, process, land-use, function, design or technique)

Criterion E.1

Importance for a community for aesthetic characteristics held in high esteem or otherwise valued by the community.

Criterion F.1

Importance for its technical, creative, design or artistic excellence, innovation or achievement.

Criterion G.1

Importance as a place highly valued by a community for reasons of religious, spiritual, symbolic, cultural, educational, or social associations.

Criterion H.1

Importance for close associations with individuals whose activities have been significant within the history of the nation, State, or region.

APPENDIX C – MHPD OVERVIEW

What does it do?

The Moreland Heritage Places Database (MHPD) provides a fully searchable electronic database (using Microsoft Access) that includes place records for all properties identified or assessed by heritage studies undertaken by Moreland City Council and its predecessors.

What does it contain?

The MHPD contains over 5,800 place records for heritage places throughout the municipality. It is important to note that not all properties will have an individual place record. For many properties within heritage precincts you will have to go to the place record for that precinct to find information about properties within it.

Generally, there are two types of place records:

Detailed place records

These are provided for heritage places or precincts of local or State significance that are either included in the Heritage Overlay (HO) of the Moreland Planning Scheme or are recommended for inclusion in the HO. A detailed record usually contains:

- An address or description of the location of the place or precinct
- A description of the buildings, vegetation or other features that comprise the place or precinct or contribute to its significance.
- A history of the place or precinct.
- References
- A statement of significance that sets out the reasons why the place is important, and
- Recommendations for future management and statutory protection.

Basic place records

These are provided for all other types of places, which include:

- Contributory places within heritage precincts. This usually only provides limited information about the property – For further detail, reference should be made to the detailed place record for the precinct that it is part of.
- Places or precincts of Local Interest
- Places that are not significant
- Demolished places
- Places with other values – e.g. Aboriginal or natural significance.

Depending on the type of place, a basic record contains only limited information including address, a brief description, any history (if known), and sometimes recommendations.

APPENDIX D - STAGE 1 CASE STUDY FINDINGS

Introduction

Two very different areas were chosen to test two approaches to the **case study** task:

- Coburg - detailed survey and recording
- Brunswick - field review

Coburg

The Coburg area is bounded by Bell Street, Sydney Road, Walsh Street and Fowler Street (inclusive). The area contains the Sheffield Street precinct (part of the Civic Precinct) and one street with many level C places (Rodda Street).

The area was surveyed comprehensively by Geoff Bellamy (GB) of the City of Moreland. A field survey form was completed for each place likely to be worthy of either individual or precinct protection. Photographs were taken of each place surveyed. Street details (eg. bluestone kerb and guttering) were also mapped.

As a result, 262 field sheets were completed. Planning, field work, photos together a total of 161 hours. This did not include: a review meeting (GB/CJ), review of the results by the consultant, and entry of data into the database.

The results of this work are still being analysed but will include:

- several new places were identified as potential heritage places (level C/B) - ie places not previously identified by the Hubbard 1991 study.
- several new precincts were identified.

Brunswick

The Brunswick case study area was contained on map sheet 16, one of a series of 29 map sheets covering the former City of Brunswick. Map sheet 16 is bounded by Sydney Road, Lygon Street, Glenlyon Road and Victoria Street. It contains part of the Sydney Road precinct, and a tiny part of the Ewing Street precinct.

The approach taken was quite different. Chris Johnston (CJ) of Context undertook the survey, focusing on checking of each level 3 places outside a precinct. She drove down every street, annotating a map and writing field notes (rather than completing a form for each place).

Planning, field work and post-field took around 5 hours. This did not include: completion of individual data sheets, the review meeting (GB/CJ), or data entry into the database.

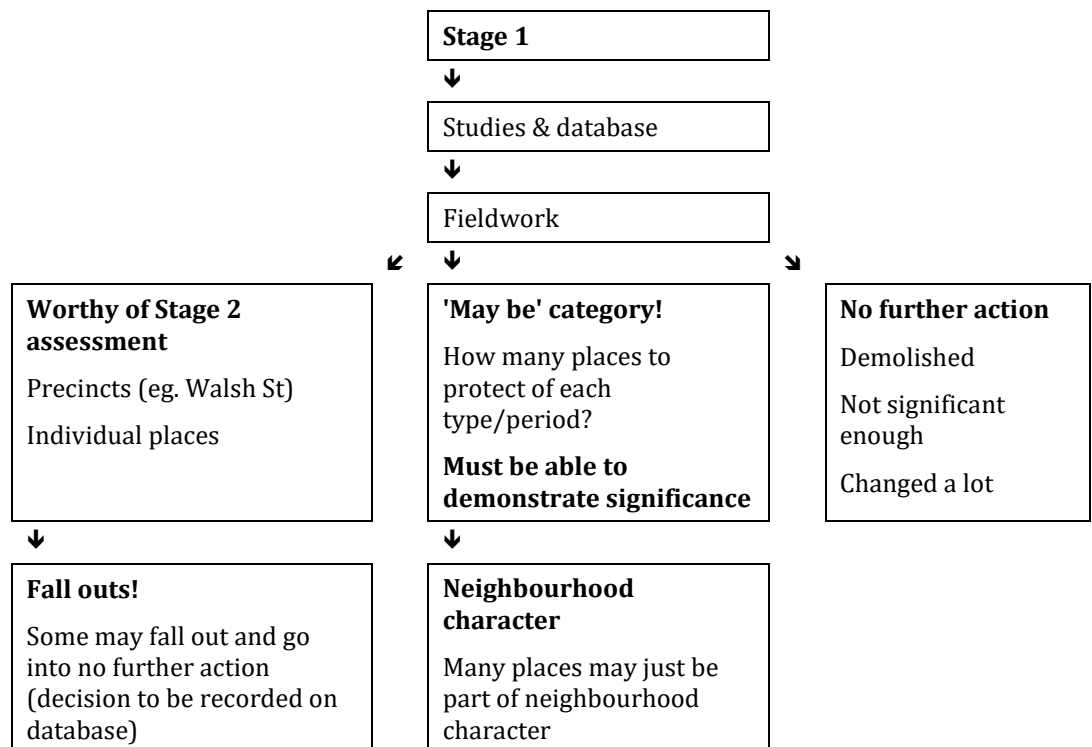
The results of this work included:

- 5 new places were identified as potential individual heritage places (level C/B) – these were places not previously identified.

- 18 level 3 places are recommended for Stage 2 assessment (also need field data sheet completed)
- 5 factories need to be checked against the *Northern Suburbs Factories Study*.
- Four new precincts for assessment in Stage 2 (2 extend over to the next map sheet)
- One precinct extension for the Sydney Road precinct

Finally, four places were found to have been demolished, and 16 level 3 places were 'demoted'.

Process and outcomes of Stage 1



Issues

The Coburg method was far more comprehensive than in Brunswick. In some ways it suited the situation as there as fewer level C places identified outside precincts, and this may indicate the potential for some places to have been missed. On the other hand, the strong interest from the Coburg Historical Society will help ensure that important gaps are filled through their nominations.

Proposed approach

The proposed approach to the overall review of 3/C and 4/D places is as follows:

- Focus on the level 3/C and 4/D places plus any new nominations (from other studies, the community etc) outside precincts, and divide the whole municipality into some smaller areas - for example, the Brunswick map sheets.

- For each area being worked on, give the area a preliminary 'windscreen' survey - this is especially important in Coburg, given that there are fewer C/D places identified (and both the community nominations and the case study indicates that some good examples were missed). For Coburg, the field surveyor would need to have the original data sheets with them.
- Do a windscreen survey, making on-the-spot judgements about each level 3/C and 4/D place (ie. recommended for Stage 2 or not!). Mark on the map, and take notes (or go back and do data sheet after completed windscreen survey for that area)
- For all places - individual places and precincts - recommended for Stage 2 assessment, complete a data form (this could be done after initial windscreen survey has been completed). A new field survey form needs to be developed to help make a quick record of precincts.
- On returning to the office, enter the results into the database, and file the sheets for Stage 2 assessment.