

PARKING OFFICERS

CARS ARE NOT ALLOWED TO PARK ON OR AROUND THE CROSSING. THE CROSSING AREA USUALLY HAS A SIGN SAYING 'NO STOPPING'.

OUR PARKING OFFICERS ENFORCE THE STATE ROAD RULES AROUND SCHOOL CROSSINGS TO PROTECT YOUR CHILDREN.

BY FOLLOWING THE RULES AROUND SCHOOLS YOU:

- Avoid accidents
- See pedestrians coming
- Improve visibility
- Avoid fines

IT'S NOT ABOUT REVENUE, IT'S ABOUT SAFETY.

CONTACT US

- Locked Bag 10, Moreland 3058
- 9240 1111
- moreland.vic.gov.au
- [facebook.com/morelandcitycouncil](https://www.facebook.com/morelandcitycouncil)
- [@morelandcouncil](https://twitter.com/morelandcouncil)
- [morelandcouncil](https://www.youtube.com/morelandcouncil)

Language Link

- 廣東話 9280 1910
- Italiano 9280 1911
- Ελληνικά 9280 1912
- عربي 9280 1913
- Türkçe 9280 1914
- Tiếng Việt 9280 1915
- हिंदी 9280 1918
- 普通话 9280 0750
- ਪੰਜਾਬੀ 9280 0751

All other languages
9280 1919

Disclaimer: Information about events is current at the time of publication. Subsequent changes to those events may occur. Although the publication may be of assistance to you, Moreland City Council does not guarantee that it is without flaw of any kind or is wholly appropriate for your particular purposes. It and its employees do not accept any responsibility, and indeed expressly disclaim any liability, for any loss or damage, whether direct or consequential, suffered by any person as the result of or arising from reliance on any information contained in the publication.

© All applicable copyrights reserved for Moreland City Council. Except for any uses permitted under the Copyright Act 1968 (Cth), no part of this publication may be reproduced in any manner or in any medium (whether electronic or otherwise) without the express permission of Moreland City Council.

Moreland City Council
90 Bell Street, Coburg 3058



DRIVERS

PLEASE HELP OUR CROSSING SUPERVISORS HELP YOU.

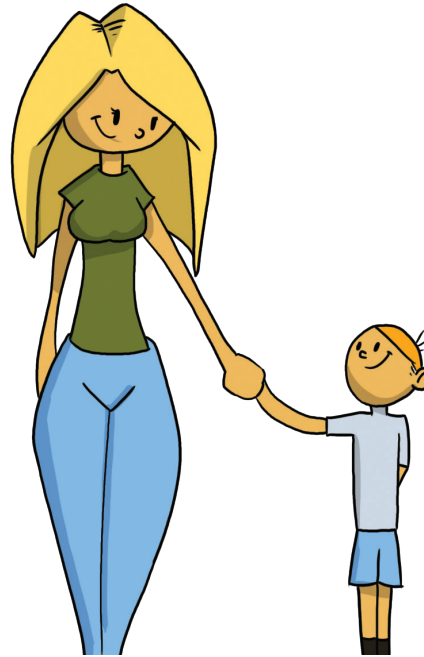


PLEASE REMEMBER TO:

- Park well away from crossings, so they can see clearly in both directions.
- Drive slowly and be prepared to stop.
- Listen to what they say.
- Completely stop your vehicle when asked and avoid rolling.
- Wait until the people have returned to the footpath before driving off.

PARENTS & CARERS

BE AN EXAMPLE TO YOUR CHILD. ALWAYS USE THE CROSSING EVEN AFTER YOU DROP YOUR CHILD OFF.



GET TO KNOW YOUR CROSSING SUPERVISOR. THEY ARE THERE FOR YOUR CHILD'S PROTECTION.

IF YOU DRIVE:

- Park legally even if you have to walk a bit further.
- Encourage other parents to cross roads safely.

SCHOOL CROSSINGS SAFETY



CROSSING SUPERVISORS

OUR DEDICATED CROSSING SUPERVISORS BRAVE ALL SORTS OF WEATHER TO ASSIST PEDESTRIANS OF ALL AGES.

MORELAND HAS 55 SCHOOL CROSSINGS THAT ARE STAFFED BY PERMANENT, PART-TIME AND RELIEF CROSSING SUPERVISORS.

- THESE CROSSING SUPERVISORS ARE LOCATED AT BOTH PEDESTRIAN LIGHT CROSSINGS AND AT FLAGGED CHILDREN'S CROSSINGS.
- SCHOOL CROSSINGS OPERATE BETWEEN 8.15 - 9.00 AM AND 3.15-4.00 PM ON SCHOOL DAYS.



