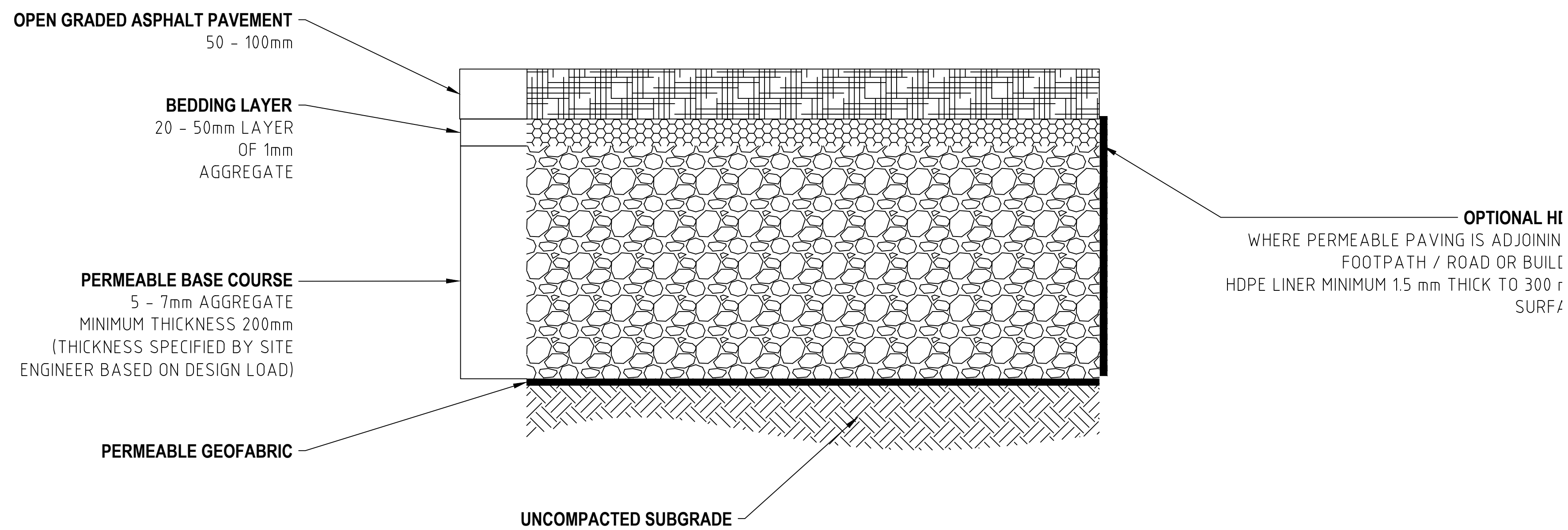


INTERLOCKING PAVERS

NOT TO SCALE



POROUS ASPHALT/PAVERS

NOT TO SCALE

0 50 100 150 200 250mm
SCALE 1:5 AT ORIGINAL SIZE

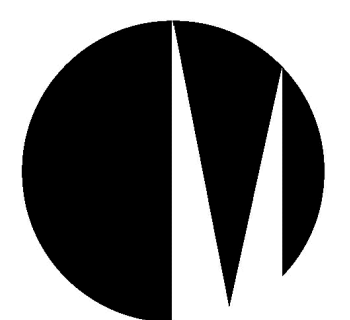
0 100 200 300 400 500mm
SCALE 1:10 AT ORIGINAL SIZE

0 200 400 600 800 1000mm
SCALE 1:20 AT ORIGINAL SIZE

DRAFT

rev	description	app'd	date
0			

MORELAND CITY COUNCIL
STANDARD WSUD DRAWINGS
PERMEABLE PAVING

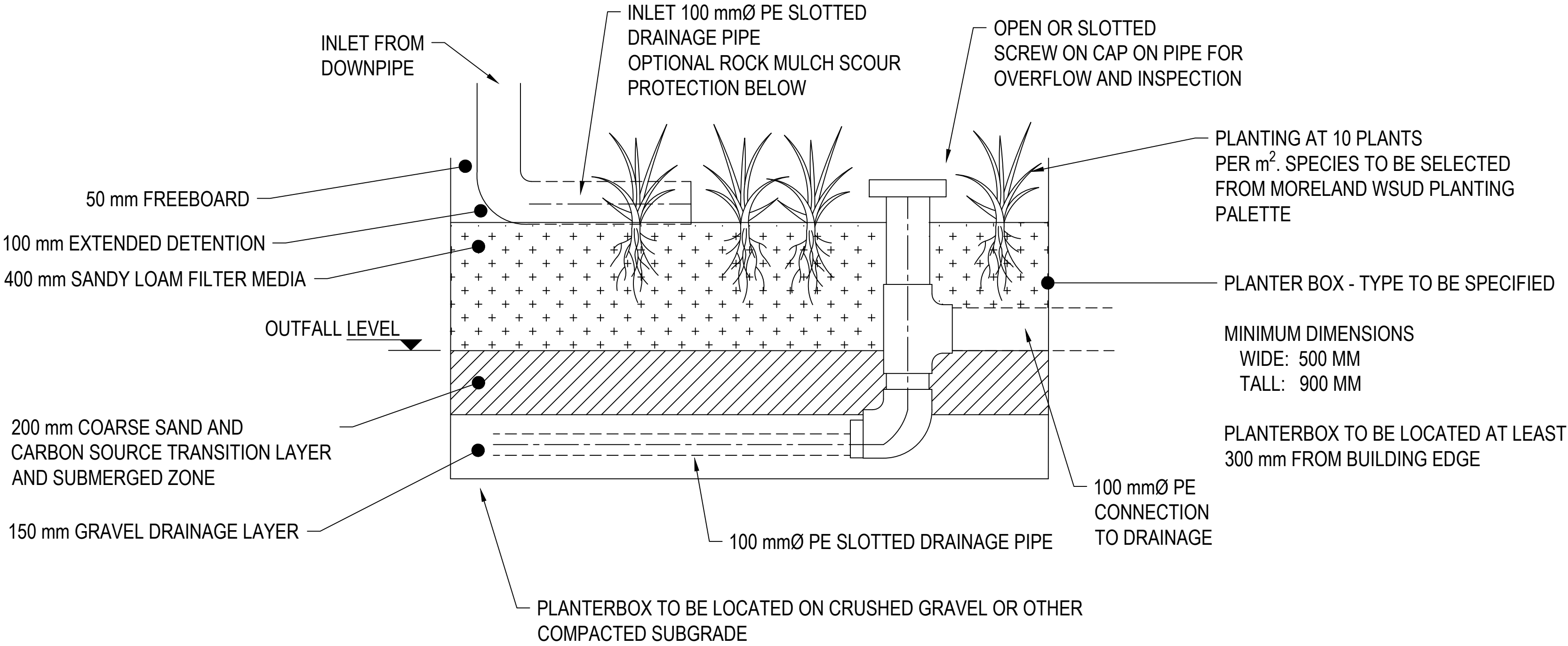


Moreland City Council

scale | AS SHOWN for A4 | job no. |
date | FEB 2015 | rev no. | 0

approved (PD)

001



PLANTER BOX RAINGARDEN CROSS SECTION
SCALE 1:10

FILTER MEDIA COMPONENT NOTES:

- F1. ALL FILTER MEDIA USED FOR THE WORKS IS TO BE APPROPRIATELY TESTED IN ACCORDANCE WITH THE FOLLOWING NOTES AND A COPY OF RESULTS SENT TO THE PROJECT SUPERINTENDENT PRIOR TO THE MATERIAL BEING PLACED ON SITE.
- F2. FILTER MEDIA SHALL HAVE A SATURATED HYDRAULIC CONDUCTIVITY IN THE RANGE OF 250-350 mm/h UNLESS OTHERWISE APPROVED BY THE SUPERINTENDENT. SATURATED HYDRAULIC CONDUCTIVITY OF POTENTIAL FILTER MEDIA SHOULD BE MEASURED USING THE ASTM F1815-06 METHOD.
- F3. FILTER EDIA, WHICH COMPLY WITH THE PARTICLE SIZE GRADING OUTLINED BELOW, WILL GENERALLY MEET SATURATED HYDRAULIC CONDUCTIVITY SPECIFICATIONS.

DESCRIPTION	PROPORTION	GRADING
CLAY & SILT	< 3 %	< 0.05 mm
VERY FINE SAND	5 - 10 %	0.05 - 0.15 mm
FINE SAND	10 - 25 %	0.15 - 0.25 mm
MEDIUM TO COARSE SAND	60 - 70 %	0.25 - 1.0 mm
COARSE SAND	7 - 10 %	1.0 - 2.0 mm
FINE GRAVEL	< 3 %	2.0 - 3.4 mm

- F4. THE FILTER MEDIA SHOULD BE WELL-GRADED i.e., IT SHOULD HAVE ALL PARTICLE SIZE RANGES PRESENT FROM THE 0.075 mm TO THE 4.75 mm SIEVE (AS DEFINED BY AS1289.3.6.1 - 1995). THERE SHOULD BE NO GAP IN THE PARTICLE SIZE GRADING, AND THE COMPOSITION SHOULD NOT BE DOMINATED BY A SMALL PARTICLE SIZE RANGE.
- F5. FILTER MEDIA THAT DO NOT MEET THE FOLLOWING ADAPTED AS4419 - 2003 - SOILS FOR LANDSCAPING AND GARDEN USE SPECIFICATION SHOULD BE REJECTED:
- a. ORGANIC MATTER CONTENT - LESS THAN 5% (w/w). AN ORGANIC CONTENT HIGHER THAN 5% IS LIKELY TO RESULT IN LEACHING OF NUTRIENTS.
 - b. pH- AS SPECIFIED FOR "NATURAL SOILS AND BLENDS" 5.5 -7.5 (pH 1:5 IN WATER).
 - c. ELECTRICAL CONDUCTIVITY (EC) - AS SPECIFIED FOR NATURAL SOILS AND SOIL BLENDS < 1.2 dS/m.
 - d. PHOSPHORUS - < 100 mg/kg. SOILS WITH PHOSPHORUS CONCENTRATIONS > 100 mg/kg SHOULD BE TESTED FOR POTENTIAL LEACHING.
- F6. POTENTIAL FILTER MEDIA SHOULD GENERALLY BE ASSESSED BY A HORTICULTURALIST TO ENSURE THAT THEY ARE CAPABLE OF SUPPORTING A HEALTHY VEGETATION COMMUNITY. THIS ASSESSMENT SHOULD TAKE INTO CONSIDERATION DELIVERY OF NUTRIENTS TO THE SYSTEM BY STORMWATER.
- F10. THE TRANSITION LAYER SHALL CONSIST OF WASHED SAND WITH 90% PARTICLES RETAINED ABOVE 0.25mm THE HYDRAULIC CONDUCTIVITY OF THE TRANSITION LAYER IS TO BE NO LESS THAN 450mm/hr.
- F12. THE DRAINAGE LAYER SHALL BE COMPOSED OF CLEAN STONE WITH ALL PARTICLES BETWEEN 4.0mm AND 7.0mm IN SIZE.
- F13. SCORIA OR QUARTZ ARE NOT SUITABLE MATERIAL FOR USE AS A DRAINAGE LAYER.

0 50 100 150 200 250mm
SCALE 1:5 AT ORIGINAL SIZE

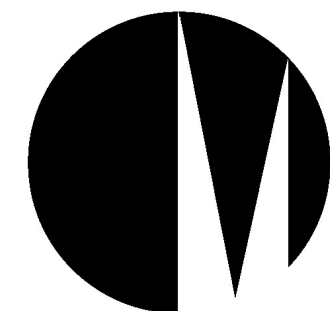
0 100 200 300 400 500mm
SCALE 1:10 AT ORIGINAL SIZE

0 200 400 600 800 1000mm
SCALE 1:20 AT ORIGINAL SIZE

DRAFT

rev	description	app'd	date
-----	-------------	-------	------

MORELAND CITY COUNCIL
STANDARD WSUD DRAWINGS
PLANTER BOX RAINGARDENS

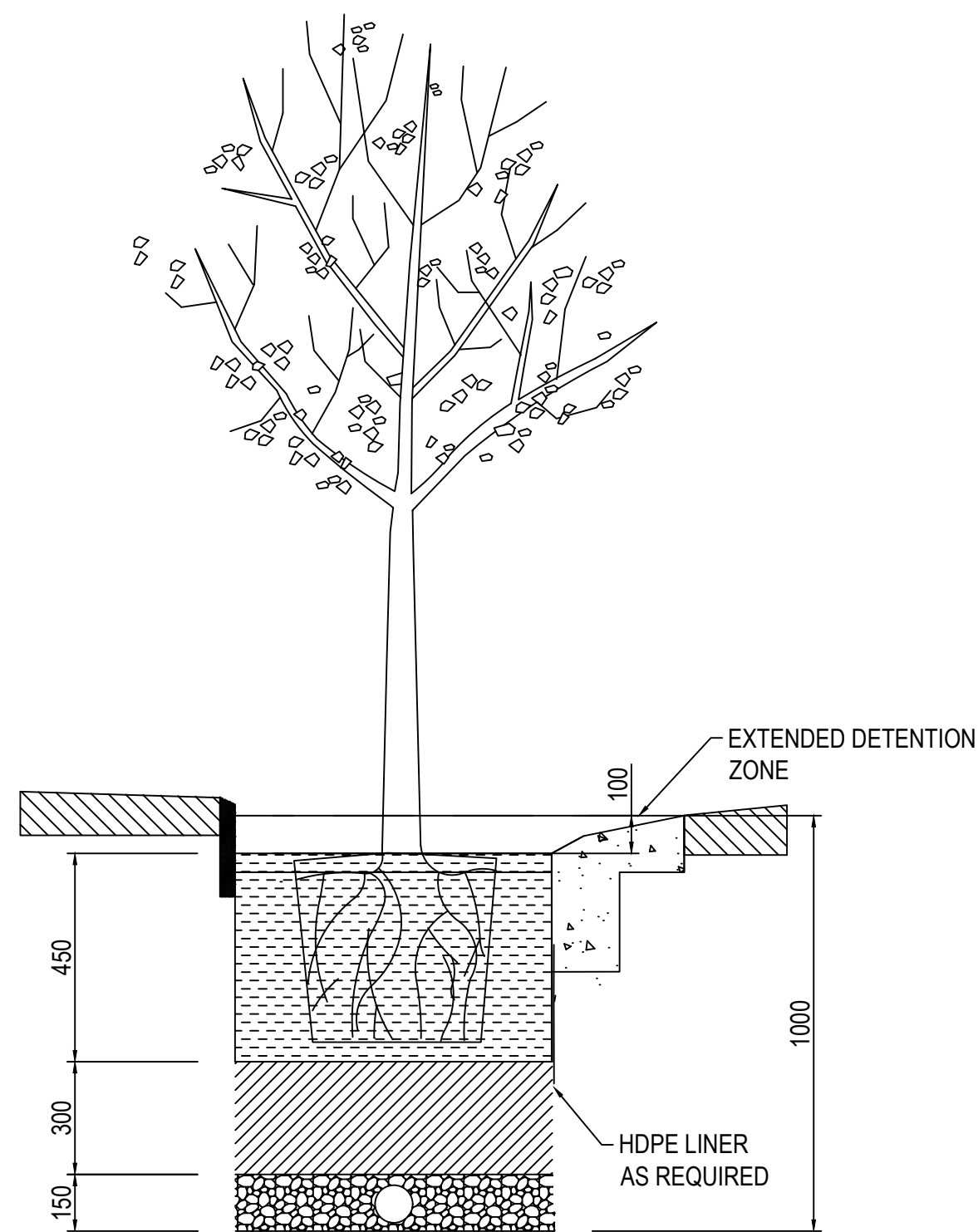
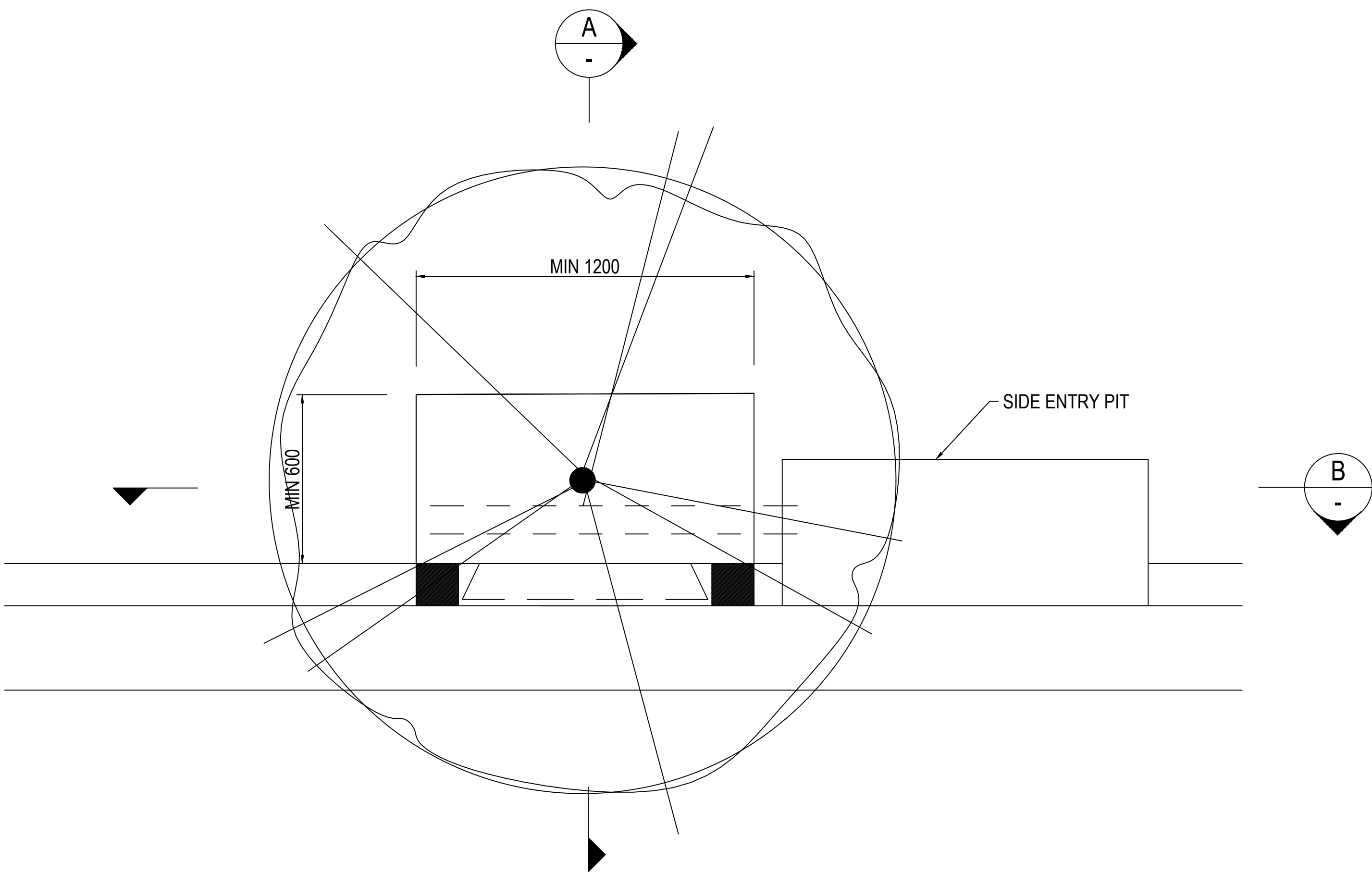


Moreland City Council

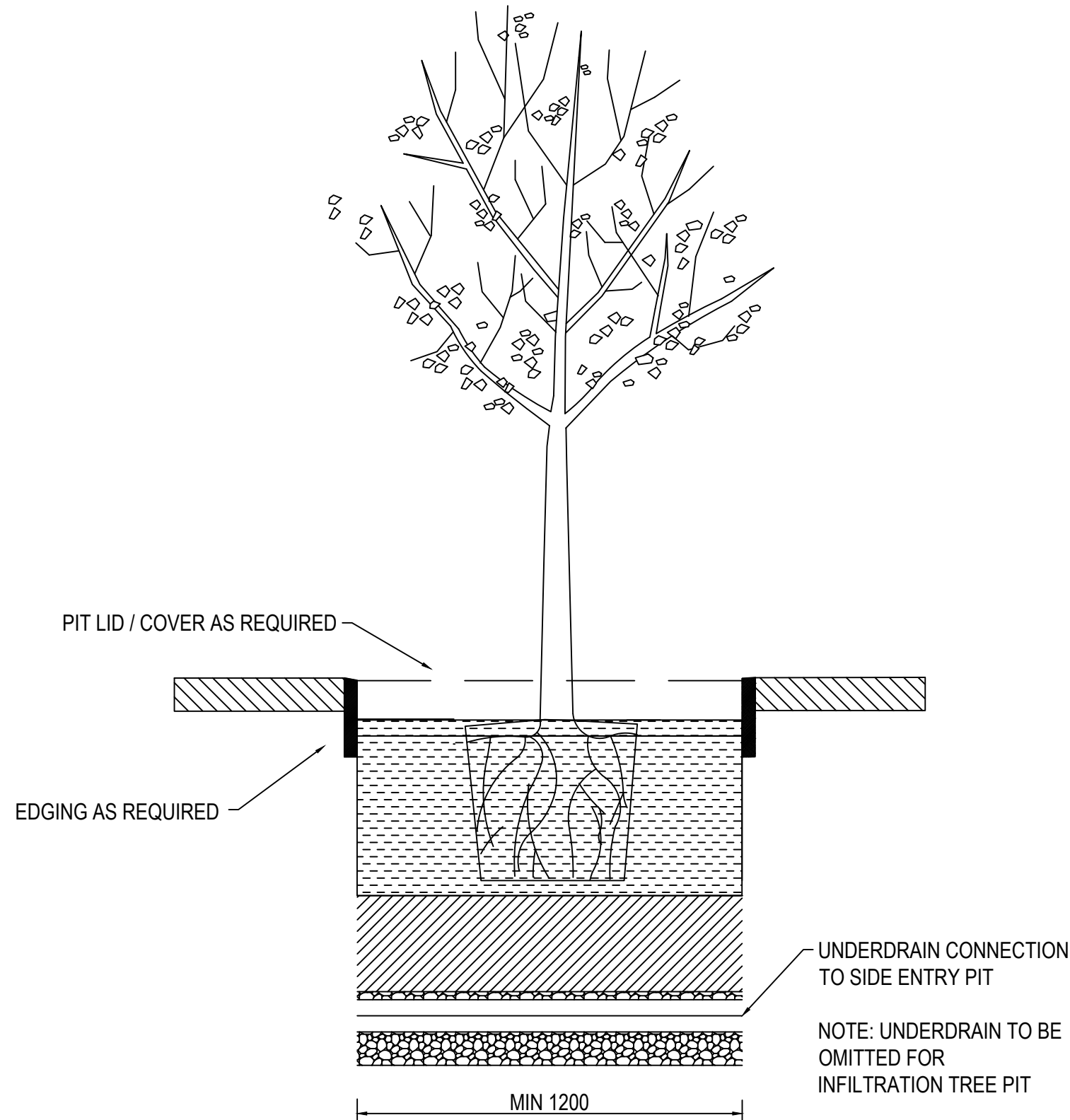
scale AS SHOWN for A4 job no.
date FEB 2015 rev no. 0

approved (PD)

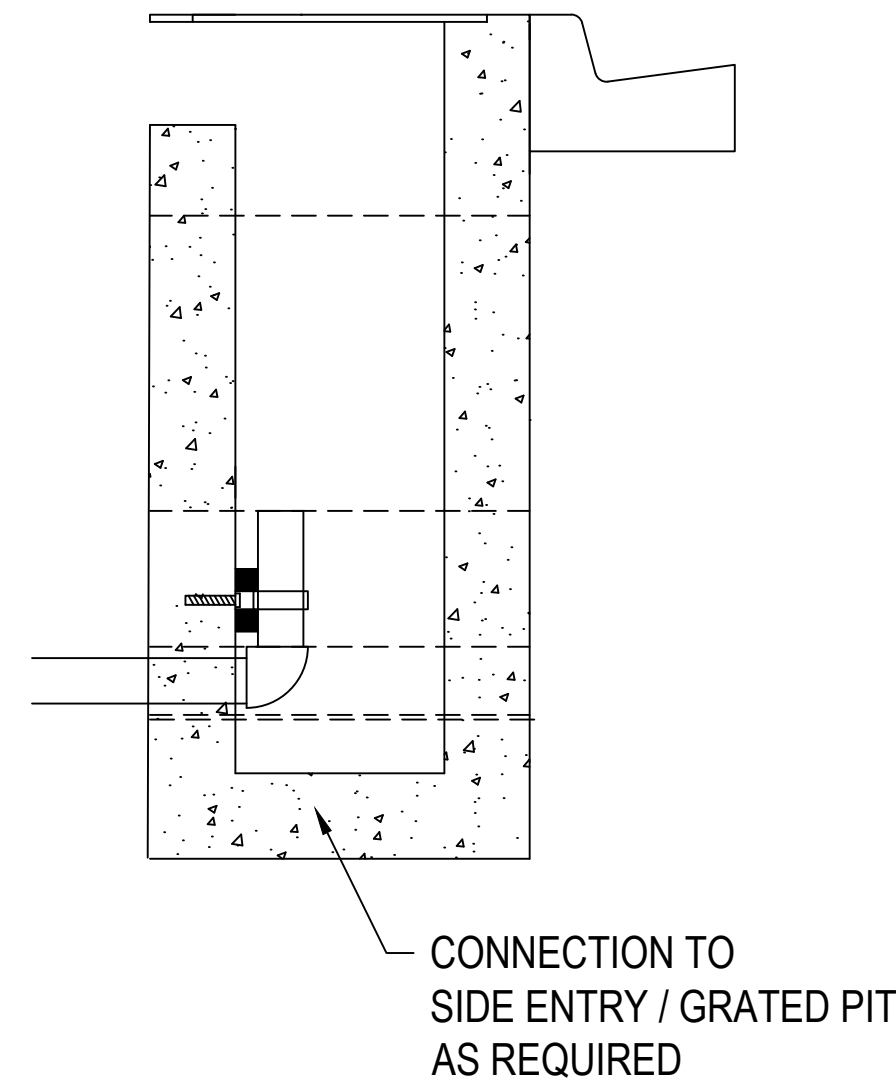
002



A SECTION
SCALE 1:20



B SECTION
SCALE 1:20

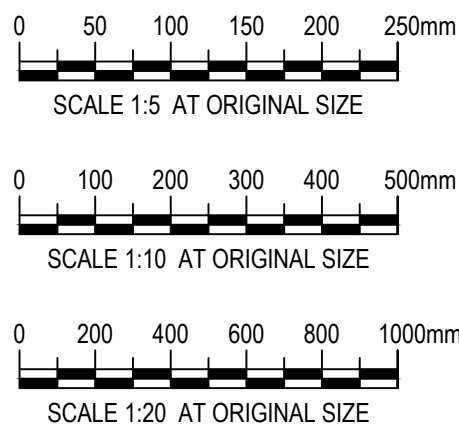


FILTER MEDIA COMPONENT NOTES:

- F1. ALL FILTER MEDIA USED FOR THE WORKS IS TO BE APPROPRIATELY TESTED IN ACCORDANCE WITH THE FOLLOWING NOTES AND A COPY OF RESULTS SENT TO THE PROJECT SUPERINTENDENT PRIOR TO THE MATERIAL BEING PLACED ON SITE.
- F2. FILTER MEDIA SHALL HAVE A SATURATED HYDRAULIC CONDUCTIVITY IN THE RANGE OF 250-350 mm/h UNLESS OTHERWISE APPROVED BY THE SUPERINTENDENT. SATURATED HYDRAULIC CONDUCTIVITY OF POTENTIAL FILTER MEDIA SHOULD BE MEASURED USING THE ASTM F1815-06 METHOD.
- F3. FILTER EDIA, WHICH COMPLY WITH THE PARTICLE SIZE GRADING OUTLINED BELOW, WILL GENERALLY MEET SATURATED HYDRAULIC CONDUCTIVITY SPECIFICATIONS.

DESCRIPTION	PROPORTION	GRADING
CLAY & SILT	< 3 %	< 0.05 mm
VERY FINE SAND	5 - 10 %	0.05 - 0.15 mm
FINE SAND	10 - 25 %	0.15 - 0.25 mm
MEDIUM TO COARSE SAND	60 - 70 %	0.25 - 1.0 mm
COARSE SAND	7 - 10 %	1.0 - 2.0 mm
FINE GRAVEL	< 3 %	2.0 - 3.4 mm

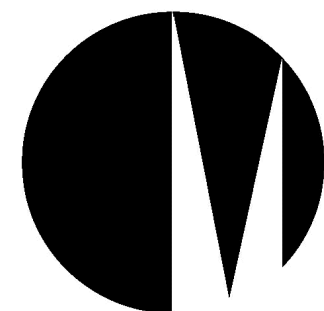
- F4. THE FILTER MEDIA SHOULD BE WELL-GRADED i.e., IT SHOULD HAVE ALL PARTICLE SIZE RANGES PRESENT FROM THE 0.075 mm TO THE 4.75 mm SIEVE (AS DEFINED BY AS1289.3.6.1 - 1995). THERE SHOULD BE NO GAP IN THE PARTICLE SIZE GRADING, AND THE COMPOSITION SHOULD NOT BE DOMINATED BY A SMALL PARTICLE SIZE RANGE.
- F5. FILTER MEDIA THAT DO NOT MEET THE FOLLOWING ADAPTED AS4419 - 2003 - SOILS FOR LANDSCAPING AND GARDEN USE SPECIFICATION SHOULD BE REJECTED:
- ORGANIC MATTER CONTENT - LESS THAN 5% (w/w). AN ORGANIC CONTENT HIGHER THAN 5% IS LIKELY TO RESULT IN LEACHING OF NUTRIENTS.
 - pH- AS SPECIFIED FOR "NATURAL SOILS AND BLENDS" 5.5 -7.5 (pH 1:5 IN WATER).
 - ELECTRICAL CONDUCTIVITY (EC) - AS SPECIFIED FOR NATURAL SOILS AND SOIL BLENDS < 1.2 dS/m.
 - PHOSPHORUS - < 100 mg/kg. SOILS WITH PHOSPHORUS CONCENTRATIONS > 100 mg/kg SHOULD BE TESTED FOR POTENTIAL LEACHING.
- F6. POTENTIAL FILTER MEDIA SHOULD GENERALLY BE ASSESSED BY A HORTICULTURALIST TO ENSURE THAT THEY ARE CAPABLE OF SUPPORTING A HEALTHY VEGETATION COMMUNITY. THIS ASSESSMENT SHOULD TAKE INTO CONSIDERATION DELIVERY OF NUTRIENTS TO THE SYSTEM BY STORMWATER.
- F10. THE TRANSITION LAYER SHALL CONSIST OF WASHED SAND WITH 90% PARTICLES RETAINED ABOVE 0.25mm THE HYDRAULIC CONDUCTIVITY OF THE TRANSITION LAYER IS TO BE NO LESS THAN 450mm/hr.
- F12. THE DRAINAGE LAYER SHALL BE COMPOSED OF CLEAN STONE WITH ALL PARTICLES BETWEEN 4.0mm AND 7.0mm IN SIZE.
- F13. SCORIA OR QUARTZ ARE NOT SUITABLE MATERIAL FOR USE AS A DRAINAGE LAYER.



DRAFT

rev	description	app'd	date
-----	-------------	-------	------

MORELAND CITY COUNCIL
STANDARD WSUD DRAWINGS
TREE PITS

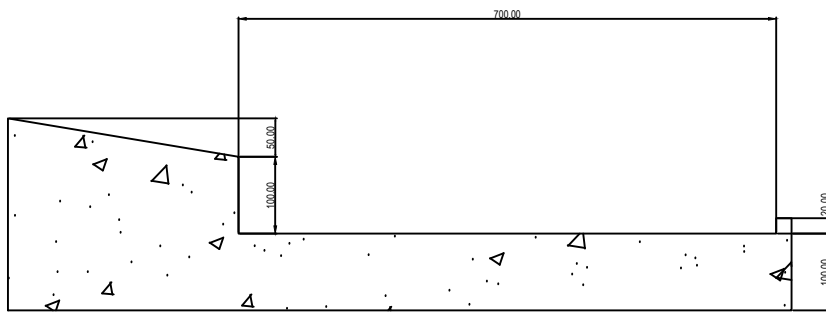
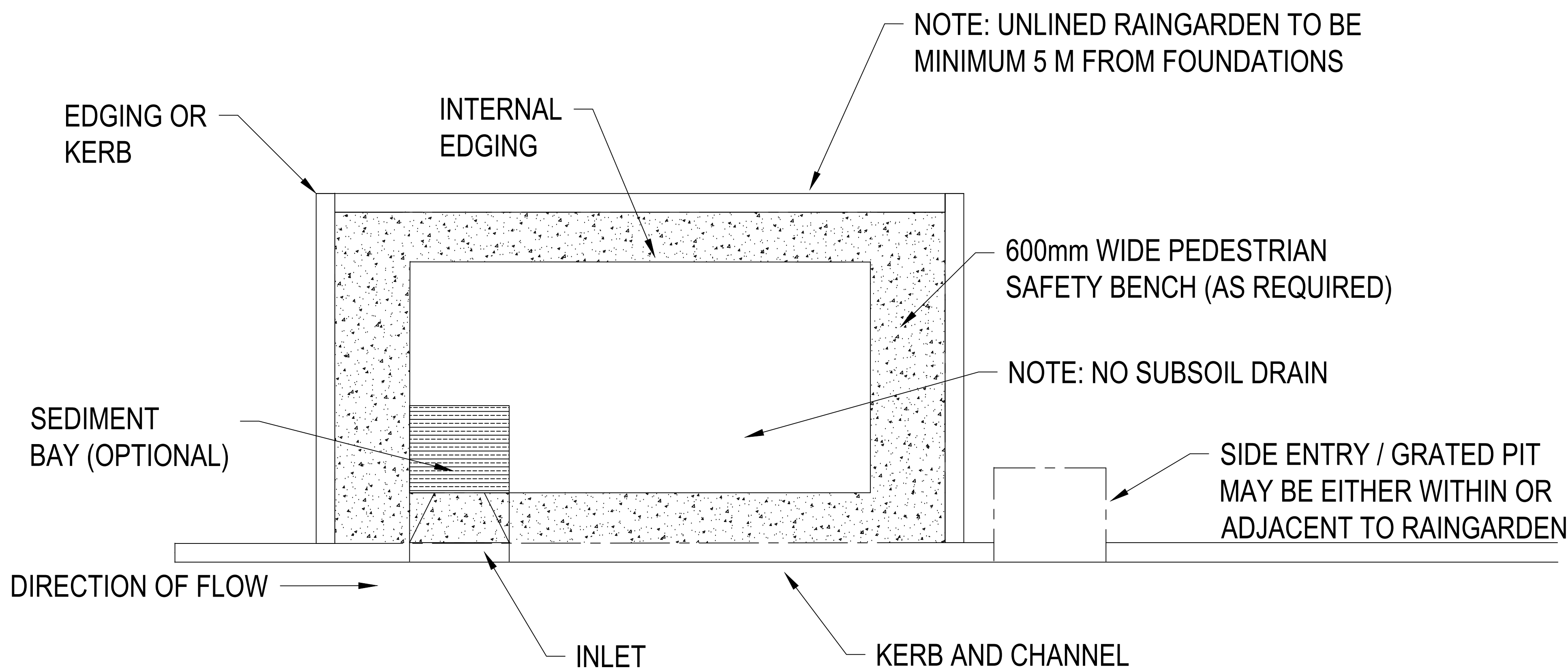


Moreland City Council

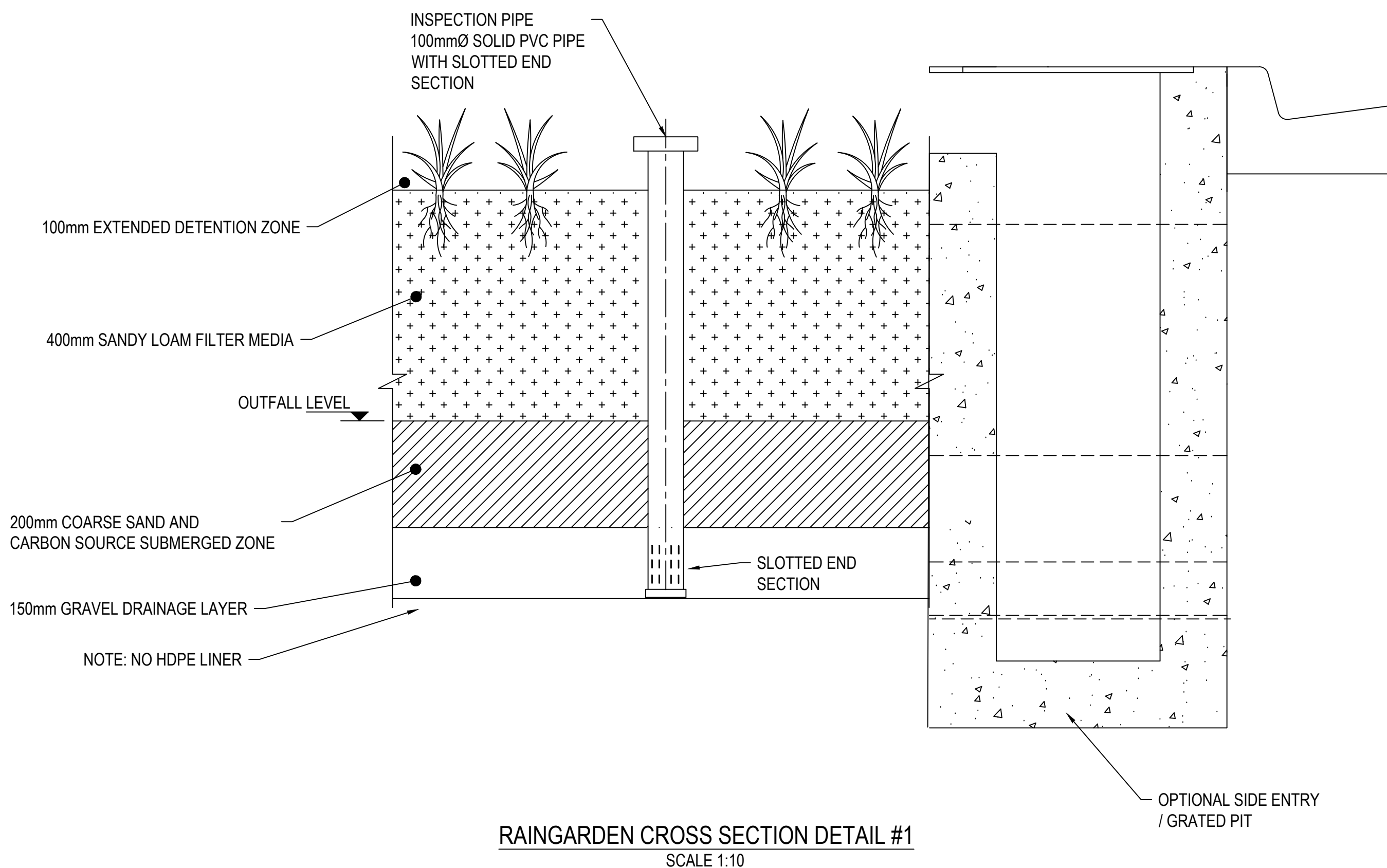
scale | AS SHOWN for A4 | job no. |
date | FEB 2015 | rev no. | 0

approved (PD)

003



INLET AND SEDIMENT BAY CROSS SECTION
SCALE 1:10

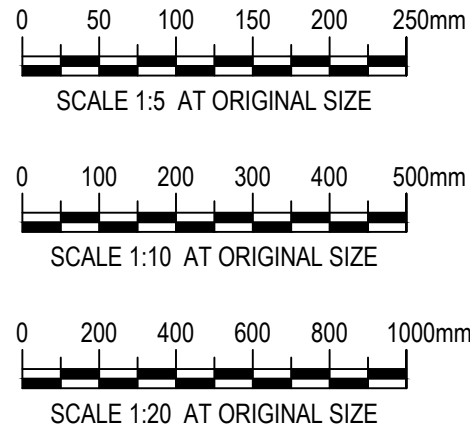


FILTER MEDIA COMPONENT NOTES:

- F1. ALL FILTER MEDIA USED FOR THE WORKS IS TO BE APPROPRIATELY TESTED IN ACCORDANCE WITH THE FOLLOWING NOTES AND A COPY OF RESULTS SENT TO THE PROJECT SUPERINTENDENT PRIOR TO THE MATERIAL BEING PLACED ON SITE.
- F2. FILTER MEDIA SHALL HAVE A SATURATED HYDRAULIC CONDUCTIVITY IN THE RANGE OF 250-350 mm/h UNLESS OTHERWISE APPROVED BY THE SUPERINTENDENT. SATURATED HYDRAULIC CONDUCTIVITY OF POTENTIAL FILTER MEDIA SHOULD BE MEASURED USING THE ASTM F1815-06 METHOD.
- F3. FILTER EDIA, WHICH COMPLY WITH THE PARTICLE SIZE GRADING OUTLINED BELOW, WILL GENERALLY MEET SATURATED HYDRAULIC CONDUCTIVITY SPECIFICATIONS.

DESCRIPTION	PROPORTION	GRADING
CLAY & SILT	< 3 %	< 0.05 mm
VERY FINE SAND	5 - 10 %	0.05 - 0.15 mm
FINE SAND	10 - 25 %	0.15 - 0.25 mm
MEDIUM TO COARSE SAND	60 - 70 %	0.25 - 1.0 mm
COARSE SAND	7 - 10 %	1.0 - 2.0 mm
FINE GRAVEL	< 3 %	2.0 - 3.4 mm

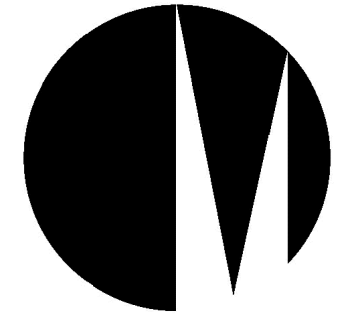
- F4. THE FILTER MEDIA SHOULD BE WELL-GRADED i.e., IT SHOULD HAVE ALL PARTICLE SIZE RANGES PRESENT FROM THE 0.075 mm TO THE 4.75 mm SIEVE (AS DEFINED BY AS1289.3.6.1 - 1995). THERE SHOULD BE NO GAP IN THE PARTICLE SIZE GRADING, AND THE COMPOSITION SHOULD NOT BE DOMINATED BY A SMALL PARTICLE SIZE RANGE.
- F5. FILTER MEDIA THAT DO NOT MEET THE FOLLOWING ADAPTED AS4419 - 2003 - SOILS FOR LANDSCAPING AND GARDEN USE SPECIFICATION SHOULD BE REJECTED:
- a. ORGANIC MATTER CONTENT - LESS THAN 5% (w/w). AN ORGANIC CONTENT HIGHER THAN 5% IS LIKELY TO RESULT IN LEACHING OF NUTRIENTS.
 - b. pH- AS SPECIFIED FOR "NATURAL SOILS AND BLENDS" 5.5 -7.5 (pH 1:5 IN WATER).
 - c. ELECTRICAL CONDUCTIVITY (EC) - AS SPECIFIED FOR NATURAL SOILS AND SOIL BLENDS < 1.2 dS/m.
 - d. PHOSPHORUS - < 100 mg/kg. SOILS WITH PHOSPHORUS CONCENTRATIONS > 100 mg/kg SHOULD BE TESTED FOR POTENTIAL LEACHING.
- F6. POTENTIAL FILTER MEDIA SHOULD GENERALLY BE ASSESSED BY A HORTICULTURALIST TO ENSURE THAT THEY ARE CAPABLE OF SUPPORTING A HEALTHY VEGETATION COMMUNITY. THIS ASSESSMENT SHOULD TAKE INTO CONSIDERATION DELIVERY OF NUTRIENTS TO THE SYSTEM BY STORMWATER.
- F10. THE TRANSITION LAYER SHALL CONSIST OF WASHED SAND WITH 90% PARTICLES RETAINED ABOVE 0.25mm THE HYDRAULIC CONDUCTIVITY OF THE TRANSITION LAYER IS TO BE NO LESS THAN 450mm/hr.
- F12. THE DRAINAGE LAYER SHALL BE COMPOSED OF CLEAN STONE WITH ALL PARTICLES BETWEEN 4.0mm AND 7.0mm IN SIZE.
- F13. SCORIA OR QUARTZ ARE NOT SUITABLE MATERIAL FOR USE AS A DRAINAGE LAYER.



DRAFT

rev	description	app'd	date
-----	-------------	-------	------

MORELAND CITY COUNCIL
STANDARD WSUD DRAWINGS
INGROUND WSUD
RAINGARDEN INFILTRATION

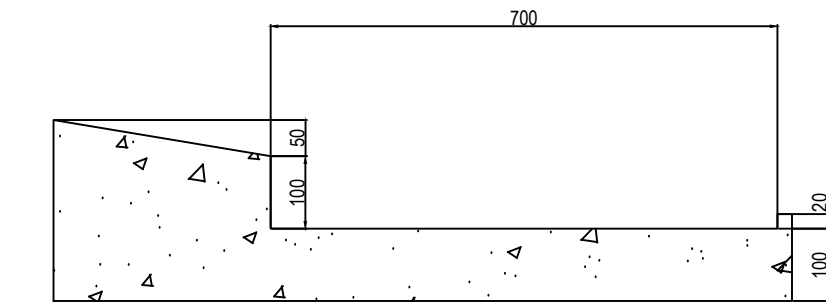
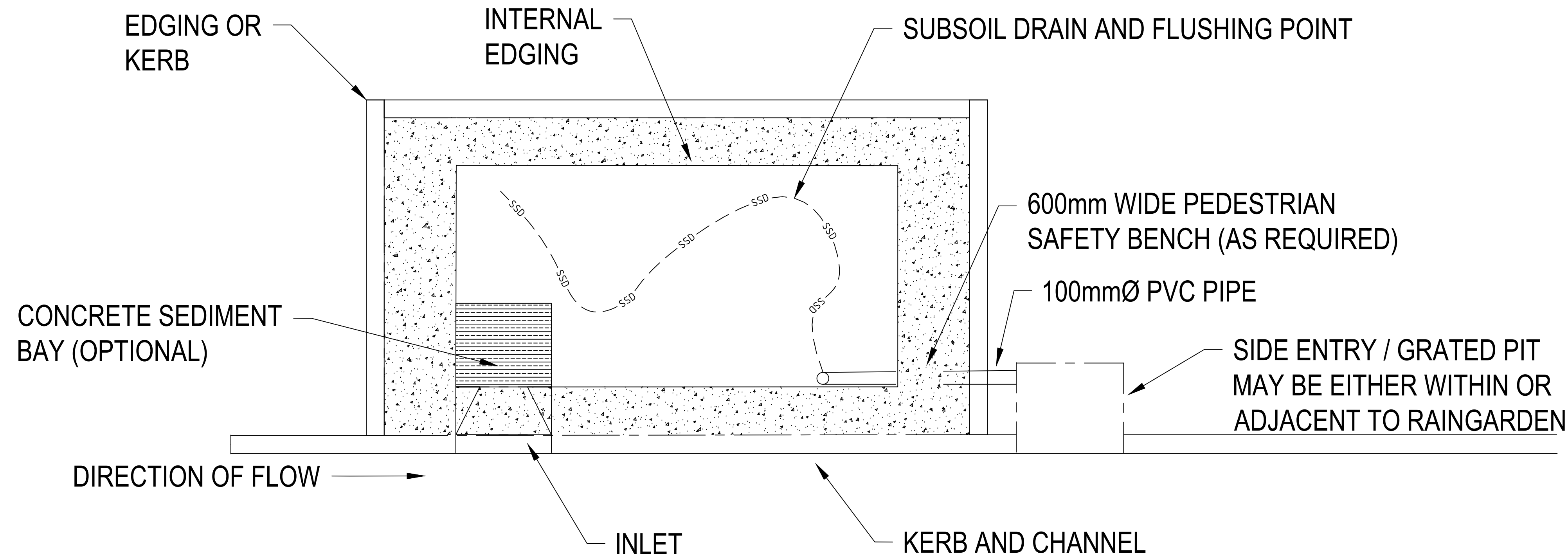


Moreland City Council

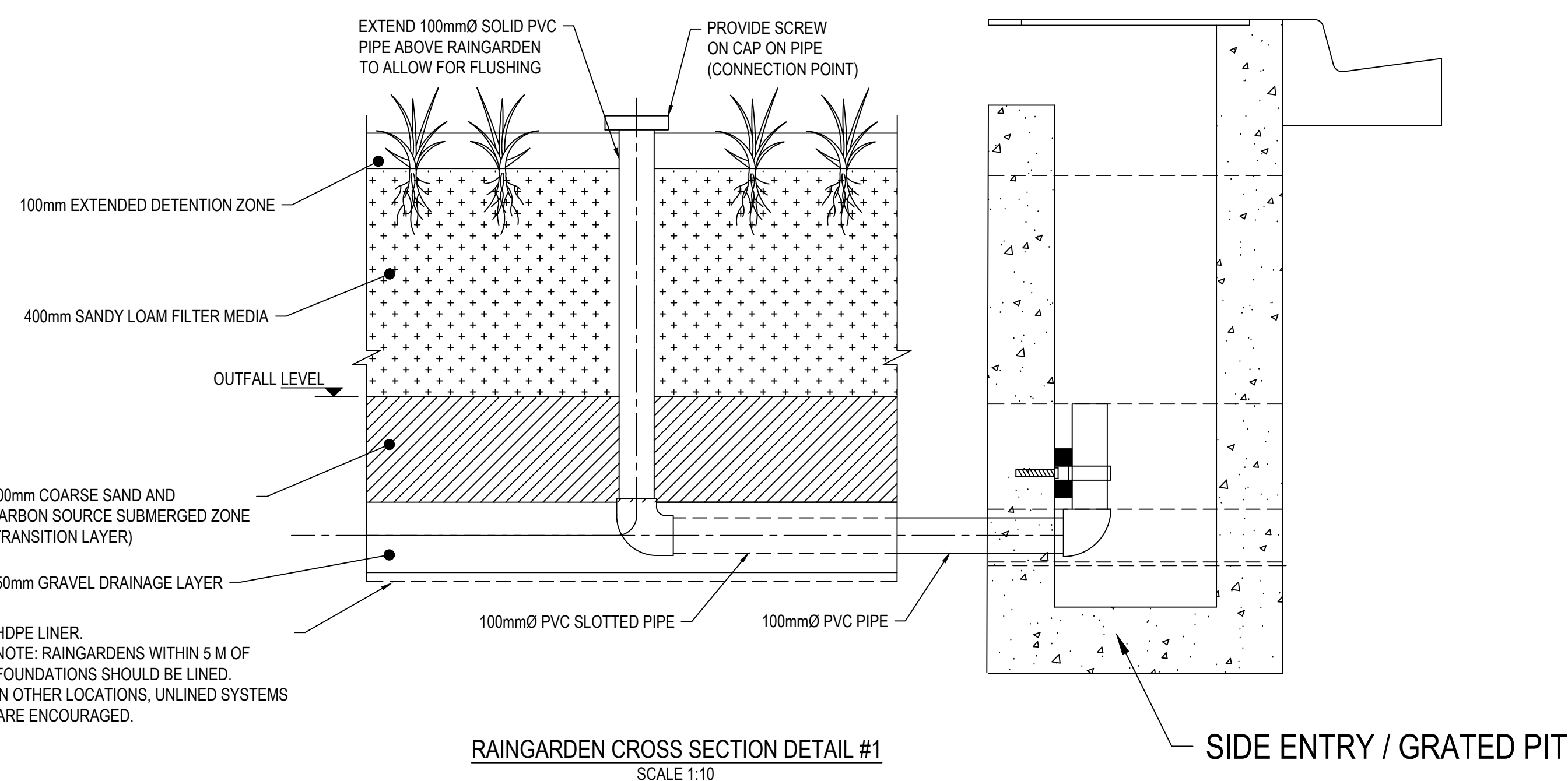
scale | AS SHOWN for A4 job no. |
date | SEPT 2016 rev no. | 0

approved (PD)

004



INLET AND SEDIMENT BAY CROSS SECTION
SCALE 1:10



FILTER MEDIA COMPONENT NOTES:

- F1. ALL FILTER MEDIA USED FOR THE WORKS IS TO BE APPROPRIATELY TESTED IN ACCORDANCE WITH THE FOLLOWING NOTES AND A COPY OF RESULTS SENT TO THE PROJECT SUPERINTENDENT PRIOR TO THE MATERIAL BEING PLACED ON SITE.
- F2. FILTER MEDIA SHALL HAVE A SATURATED HYDRAULIC CONDUCTIVITY IN THE RANGE OF 250-350 mm/h UNLESS OTHERWISE APPROVED BY THE SUPERINTENDENT. SATURATED HYDRAULIC CONDUCTIVITY OF POTENTIAL FILTER MEDIA SHOULD BE MEASURED USING THE ASTM F1815-06 METHOD.
- F3. FILTER EDIA, WHICH COMPLY WITH THE PARTICLE SIZE GRADING OUTLINED BELOW, WILL GENERALLY MEET SATURATED HYDRAULIC CONDUCTIVITY SPECIFICATIONS.

DESCRIPTION	PROPORTION	GRADING
CLAY & SILT	< 3 %	< 0.05 mm
VERY FINE SAND	5 - 10 %	0.05 - 0.15 mm
FINE SAND	10 - 25 %	0.15 - 0.25 mm
MEDIUM TO COARSE SAND	60 - 70 %	0.25 - 1.0 mm
COARSE SAND	7 - 10 %	1.0 - 2.0 mm
FINE GRAVEL	< 3 %	2.0 - 3.4 mm

- F4. THE FILTER MEDIA SHOULD BE WELL-GRADED i.e., IT SHOULD HAVE ALL PARTICLE SIZE RANGES PRESENT FROM THE 0.075 mm TO THE 4.75 mm SIEVE (AS DEFINED BY AS1289.3.6.1 - 1995). THERE SHOULD BE NO GAP IN THE PARTICLE SIZE GRADING, AND THE COMPOSITION SHOULD NOT BE DOMINATED BY A SMALL PARTICLE SIZE RANGE.
- F5. FILTER MEDIA THAT DO NOT MEET THE FOLLOWING ADAPTED AS4419 - 2003 - SOILS FOR LANDSCAPING AND GARDEN USE SPECIFICATION SHOULD BE REJECTED:
 - a. ORGANIC MATTER CONTENT - LESS THAN 5% (w/w). AN ORGANIC CONTENT HIGHER THAN 5% IS LIKELY TO RESULT IN LEACHING OF NUTRIENTS.
 - b. pH- AS SPECIFIED FOR "NATURAL SOILS AND BLENDS" 5.5 - 7.5 (pH 1:5 IN WATER).
 - c. ELECTRICAL CONDUCTIVITY (EC) - AS SPECIFIED FOR NATURAL SOILS AND SOIL BLENDS < 1.2 dS/m.
 - d. PHOSPHORUS - < 100 mg/kg. SOILS WITH PHOSPHORUS CONCENTRATIONS > 100 mg/kg SHOULD BE TESTED FOR POTENTIAL LEACHING.
- F6. POTENTIAL FILTER MEDIA SHOULD GENERALLY BE ASSESSED BY A HORTICULTURALIST TO ENSURE THAT THEY ARE CAPABLE OF SUPPORTING A HEALTHY VEGETATION COMMUNITY. THIS ASSESSMENT SHOULD TAKE INTO CONSIDERATION DELIVERY OF NUTRIENTS TO THE SYSTEM BY STORMWATER.
- F10. THE TRANSITION LAYER SHALL CONSIST OF WASHED SAND WITH 90% PARTICLES RETAINED ABOVE 0.25mm THE HYDRAULIC CONDUCTIVITY OF THE TRANSITION LAYER IS TO BE NO LESS THAN 450mm/hr.
- F12. THE DRAINAGE LAYER SHALL BE COMPOSED OF CLEAN STONE WITH ALL PARTICLES BETWEEN 4.0mm AND 7.0mm IN SIZE.
- F13. SCORIA OR QUARTZ ARE NOT SUITABLE MATERIAL FOR USE AS A DRAINAGE LAYER.

0 50 100 150 200 250mm
SCALE 1:5 AT ORIGINAL SIZE

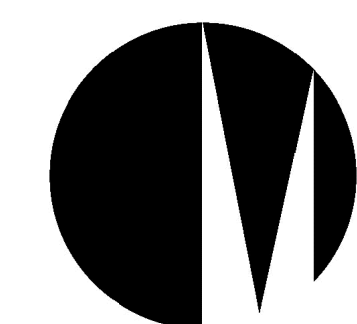
0 100 200 300 400 500mm
SCALE 1:10 AT ORIGINAL SIZE

0 200 400 600 800 1000mm
SCALE 1:20 AT ORIGINAL SIZE

DRAFT

rev	description	app'd	date
0			

MORELAND CITY COUNCIL
STANDARD WSUD DRAWINGS
INGROUND WSUD
RAINGARDEN DRAINED



Moreland City Council

scale | AS SHOWN for A4 job no. |
date | SEPT 2016 rev no. | 0

approved (PD)

005